

## Anti-MED28 Antibody

Catalog Number: A08611

### About MED28

The mediator complex is a multi-protein transcriptional co-activator that is expressed ubiquitously in eukaryotes from yeast to mammals and is required for induction of RNA polymerase II (pol II) transcription by DNA binding transcription factor. One of the proteins in this complex is MED28, also known as Magicin. MED28 is expressed in many cell lines and tissues. It has been shown that a down-regulation of MED28 expression in NIH3T3 cells results in a significant induction of several genes associated with smooth muscle cell differentiation and conversely its over-expression represses expression of SMC genes. MED28 can also form a ternary complex with Grb2 and Merlin, the neurofibromatosis 2 tumor suppressor protein, indicating that MED28 may play a role in Merlin's tumor suppressive activity. MED28 has also been recently identified as an HIV dependency factor (HDF), suggesting that MED28 may be an important drug target in HIV treatment. At least two isoforms of MED28 are known to exist.

### Overview

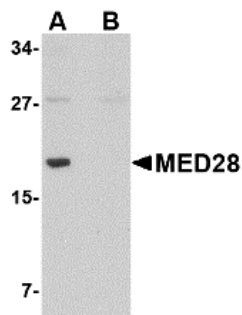
Product Name	Anti-MED28 Antibody
Reactive Species	Human, Mouse
Description	Boster Bio Anti-MED28 Antibody (Catalog # A08611). Tested in ELISA, WB, IHC-P applications. This antibody reacts with Human, Mouse.
Application	ELISA, IHC-P, WB
Clonality	Polyclonal
Formulation	MED28 Antibody is supplied in PBS containing 0.02% sodium azide.
Storage Instructions	MED28 antibody can be stored at 4°C for three months and -20°C, stable for up to one year. Avoid repeated freeze-thaw cycles. Antibodies should not be exposed to prolonged high temperatures.
Host	Rabbit
Uniprot ID	Q9H204

### Technical Details

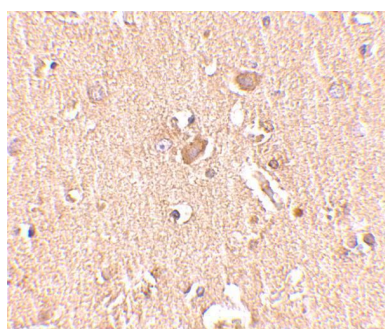
Immunogen	MED28 antibody was raised against a 17 amino acid synthetic peptide from near the center of human MED28. The immunogen is located within amino acids 50 - 100 of MED28.
Predicted Reactive Species	Bovine, Rat
Isotype	IgG
Form	Liquid
Concentration	1 mg/mL

Purification	MED28 Antibody is affinity chromatography purified via peptide column.
Suggested Dilutions	MED28 antibody can be used for detection of MED28 by Western blot at 1 ug/mL. Antibody can also be used for immunohistochemistry starting at 2.5 ug/mL. For immunofluorescence start at 20 ug/mL. Antibody validated: Western Blot in human samples and Immunohistochemistry in human samples. All other applications and species not yet tested. Optimal dilutions for each application should be determined by the researcher.

## Anti-MED28 Antibody (A08611) Images



Western blot analysis of MED28 in human brain tissue lysate with MED28 antibody at 1 ug/mL in (A) the absence and (B) the presence of blocking peptide.



Immunohistochemistry of MED28 in human brain tissue with MED28 antibody at 2.5 ug/mL.

### Submit a product review to [Biocompare.com](https://www.biocompare.com)

Submit a review of this product to [Biocompare.com](https://www.biocompare.com) to receive a \$20 Amazon.com giftcard! Your reviews help your fellow scientists make the right decisions. Thank you for your contribution.



Anti-MED28 Antibody

For Research Use Only. Not for use in diagnostic procedures.