

## Anti-MED28 Antibody Picoband®

Catalog Number: A08611-2

### About MED28

Mediator of RNA polymerase II transcription subunit 28 is an enzyme that in humans is encoded by the MED28 gene. MED28 is a component of the Mediator complex, a coactivator involved in the regulated transcription of nearly all RNA polymerase II-dependent genes. Mediator functions as a bridge to convey information from gene-specific regulatory proteins to the basal RNA polymerase.

### Overview

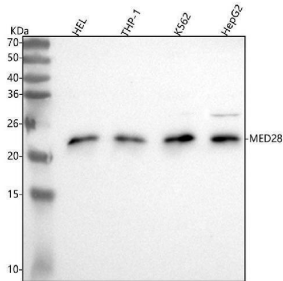
Product Name	Anti-MED28 Antibody Picoband®
Reactive Species	Human
Description	Boster Bio Anti-MED28 Antibody Picoband® catalog # A08611-2. Tested in ELISA, Flow Cytometry, IP, WB applications. This antibody reacts with Human. The brand Picoband indicates this is a premium antibody that guarantees superior quality, high affinity, and strong signals with minimal background in Western blot applications. Only our best-performing antibodies are designated as Picoband, ensuring unmatched performance.
Application	ELISA, Flow Cytometry, IP, WB
Clonality	Polyclonal
Formulation	Each vial contains 4 mg Trehalose, 0.9 mg NaCl, 0.2 mg Na <sub>2</sub> HPO <sub>4</sub> .
Storage Instructions	At -20°C for one year from date of receipt. After reconstitution, at 4°C for one month. It can also be aliquotted and stored frozen at -20°C for six months. Avoid repeated freezing and thawing.
Host	Rabbit
Uniprot ID	Q9H204

### Technical Details

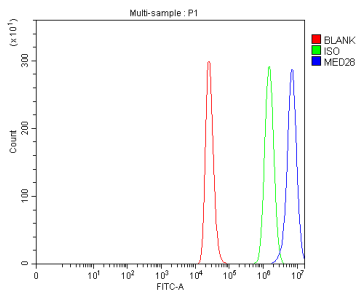
Immunogen	E.coli-derived human MED28 recombinant protein (Position: M1-T178). Human MED28 shares 94.4% and 94.9% amino acid (aa) sequence identity with mouse and rat MED28, respectively.
Recommended Detection Systems	Boster recommends Enhanced Chemiluminescent Kit with anti-Rabbit IgG (EK1002) for Western blot.
Form	Lyophilized
Concentration	Adding 0.2 ml of distilled water will yield a concentration of 500 µg/ml.
Purification	Immunogen affinity purified.
Suggested Dilutions	Western blot, 0.25-0.5 µg/ml, Human Immunoprecipitation, 0.5-2 µg/ml, Human

Flow Cytometry (Fixed), 1-3 ug/1x10<sup>6</sup> cells, Human  
ELISA, 0.1-0.5 ug/ml, -

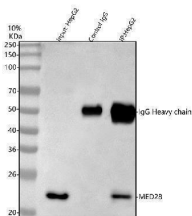
## Anti-MED28 Antibody Picoband® (A08611-2) Images



Western blot analysis of MED28 using anti-MED28 antibody (A08611-2). Electrophoresis was performed on a 5-20% SDS-PAGE gel at 70V (Stacking gel) / 90V (Resolving gel) for 2-3 hours. The sample well of each lane was loaded with 30 ug of sample under reducing conditions. Lane 1: human HEL whole cell lysates, Lane 2: human THP-1 whole cell lysates, Lane 3: human K562 whole cell lysates, Lane 4: human HepG2 whole cell lysates. After electrophoresis, proteins were transferred to a nitrocellulose membrane at 150 mA for 50-90 minutes. Blocked the membrane with 5% non-fat milk/TBS for 1.5 hour at RT. The membrane was incubated with rabbit anti-MED28 antigen affinity purified polyclonal antibody (Catalog # A08611-2) at 0.5 ug/mL overnight at 4°C, then washed with TBS-0.1%Tween 3 times with 5 minutes each and probed with a goat anti-rabbit IgG-HRP secondary antibody at a dilution of 1:5000 for 1.5 hour at RT. The signal is developed using an Enhanced Chemiluminescent detection (ECL) kit (Catalog # EK1002) with Tanon 5200 system. A specific band was detected for MED28 at approximately 24 kDa. The expected band size for MED28 is at 20 kDa.



Flow Cytometry analysis of THP-1 cells using anti-MED28 antibody (A08611-2). Overlay histogram showing THP-1 cells stained with A08611-2 (Blue line). To facilitate intracellular staining, cells were fixed with 4% paraformaldehyde and permeabilized with permeabilization buffer. The cells were blocked with 10% normal goat serum. And then incubated with rabbit anti-MED28 Antibody (A08611-2, 1 ug/1x10<sup>6</sup> cells) for 30 min at 20°C. DyLight®488 conjugated goat anti-rabbit IgG (BA1127, 5-10 ug/1x10<sup>6</sup> cells) was used as secondary antibody for 30 minutes at 20°C. Isotype control antibody (Green line) was rabbit IgG (1 ug/1x10<sup>6</sup>) used under the same conditions. Unlabelled sample (Red line) was also used as a control.



Immunoprecipitating MED28 in HepG2 whole cell lysate. Western blot analysis of MED28 using anti-MED28 antibody (A08611-2); Lane 1: HepG2 whole cell lysates (30ug); Lane 2: Rabbit control IgG instead of anti-MED28 antibody in HepG2 whole cell lysate; Lane 3: anti-MED28 antibody (2ug) + HepG2 whole cell lysate (500ug). After electrophoresis, proteins were transferred to a membrane. Then the membrane was incubated with rabbit anti-MED28 antigen affinity purified polyclonal antibody (A08611-2) at a dilution of 0.5 ug/mL and probed with a goat anti-rabbit IgG-HRP secondary antibody (Catalog # BA1054). The signal is developed using ECL Plus Western Blotting Substrate (Catalog # AR1196-200). A specific band was detected for MED28 at approximately 24 kDa. The expected band size for MED28 is at 20 kDa.

## Submit a product review to Biocompare.com

Submit a review of this product to Biocompare.com to receive a \$20 Amazon.com giftcard! Your reviews help your fellow scientists make the right decisions. Thank you for your contribution.



### Anti-MED28 Antibody

For Research Use Only. Not for use in diagnostic procedures.