

## Anti-LASS5 CERS5 Antibody

Catalog Number: A08612

### About CERS5

The LASS (longevity assurance homolog) family members represent a subgroup of the homeobox gene family and are highly conserved from yeasts to mammals. Six members of this family of proteins have been characterized (LASS1-6) and all are involved in ceramide synthesis during cell growth regulation and cancer differentiation. LASS5, also called Trh4, is a 392 amino acid endoplasmic reticulum, multi-pass membrane protein.

Functioning as a dihydro-ceramide synthase, LASS5 is involved in the production of sphingolipids containing mainly one fatty acid donor (N-linked palmitoyl-ceramide) in a fumonisin B1-independent manner. It uses palmitoyl-CoA as an acyl donor and is involved in the synthesis of C14, C16 and C18-ceramide. LASS5 is the most abundantly expressed and predominant ceramide synthase isoform in lung epithelia. Recent studies show that LASS5 partially correct growth and apoptosis.

### Overview

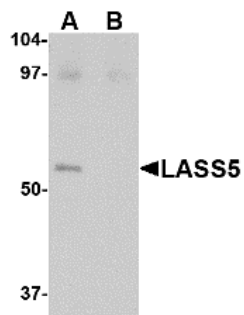
Product Name	Anti-LASS5 CERS5 Antibody
Reactive Species	Human, Mouse, Rat
Description	Boster Bio Anti-LASS5 CERS5 Antibody (Catalog # A08612). Tested in ELISA, WB, IF applications. This antibody reacts with Human, Mouse, Rat.
Application	ELISA, IF, WB
Clonality	Polyclonal
Formulation	LASS5 Antibody is supplied in PBS containing 0.02% sodium azide.
Storage Instructions	LASS5 antibody can be stored at 4°C for three months and -20°C, stable for up to one year. Avoid repeated freeze-thaw cycles. Antibodies should not be exposed to prolonged high temperatures.
Host	Rabbit
Uniprot ID	Q8N5B7

### Technical Details

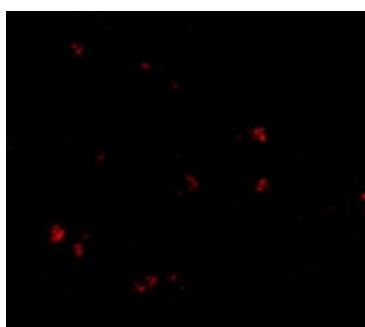
Immunogen	LASS5 antibody was raised against a 17 amino acid synthetic peptide near the carboxy terminus of the human LASS5. The immunogen is located within the last 50 amino acids of LASS5.
Predicted Reactive Species	Bovine, Rat
Cross Reactivity	Multiple isoforms of LASS5 are known to exist. This antibody may cross-react with the highly homologous LASS6.
Isotype	IgG
Form	Liquid

Concentration	1 mg/mL
Purification	LASS5 Antibody is affinity chromatography purified via peptide column.
Suggested Dilutions	LASS5 antibody can be used for detection of LASS5 by Western blot at 1 ug/mL. Antibody can also be used for immunofluorescence starting at 20 ug/mL. For immunofluorescence start at 20 ug/mL. Antibody validated: Western Blot in human samples and Immunofluorescence in human samples. All other applications and species not yet tested. Optimal dilutions for each application should be determined by the researcher.

## Anti-LASS5 CERS5 Antibody (A08612) Images



Western blot analysis of LASS5 in SK-N-SH lysate with LASS5 antibody at 1 ug/mL in the (A) absence and (B) presence of blocking peptide.



Immunofluorescence of LASS5 in human brain tissue with LASS5 antibody at 20 ug/mL.

### Submit a product review to [Biocompare.com](https://www.biocompare.com)

Submit a review of this product to [Biocompare.com](https://www.biocompare.com) to receive a \$20 Amazon.com giftcard! Your reviews help your fellow scientists make the right decisions. Thank you for your contribution.



Anti-LASS5 CERS5 Antibody

For Research Use Only. Not for use in diagnostic procedures.