

Anti-Sodium/calcium exchanger 2 SLC8A2 Antibody

Catalog Number: A08627

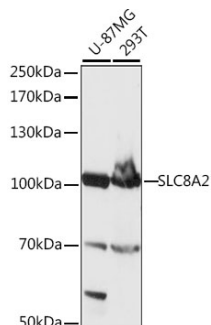
Overview

Product Name	Anti-Sodium/calcium exchanger 2 SLC8A2 Antibody
Reactive Species	Human
Description	Boster Bio Anti-Sodium/calcium exchanger 2 SLC8A2 Antibody catalog # A08627. Tested in WB applications. This antibody reacts with Human.
Application	WB
Clonality	Polyclonal
Formulation	Rabbit IgG, 1mg/ml in PBS with 0.02% sodium azide, 50% glycerol, pH7.2
Storage Instructions	Store at -20°C for one year. For short term storage and frequent use, store at 4°C for up to one month. Avoid repeated freeze-thaw cycles.
Host	Rabbit
Uniprot ID	Q9UPR5

Technical Details

Immunogen	Recombinant fusion protein of human SLC8A2(NP_055878.1).
Isotype	IgG
Form	Liquid
Concentration	1 mg/ml
Purification	The antibody was affinity-purified from rabbit antiserum by affinity-chromatography using epitope-specific immunogen and the purity is > 95% (by SDS-PAGE).
Suggested Dilutions	WB: 1:500-1:2000

Anti-Sodium/calcium exchanger 2 SLC8A2 Antibody (A08627) Images



Western blot analysis of extracts of various cell lines, using SLC8A2 antibody at 1:1000 dilution. Secondary antibody: HRP Goat Anti-Rabbit IgG at 1:10000 dilution. Lysates/proteins: 25ug per lane. Blocking buffer: 3% nonfat dry milk in TBST. Detection: ECL Basic Kit. Exposure time: 10s.

Submit a product review to Biocompare.com

Submit a review of this product to Biocompare.com to receive a \$20 Amazon.com giftcard! Your reviews help your fellow scientists make the right decisions. Thank you for your contribution.



Anti-Sodium/calcium exchanger 2 SLC8A2 Antibody

For Research Use Only. Not for use in diagnostic procedures.