

Anti-PGAP1 Antibody Picoband®

Catalog Number: A08640

About PGAP1

Post-GPI attachment to proteins 1 is a protein that in humans is encoded by the PGAP1 gene. The protein encoded by this gene functions early in the glycosylphosphatidylinositol (GPI) biosynthetic pathway, catalyzing the inositol deacylation of GPI. The encoded protein is required for the production of GPI that can attach to proteins, and this may be an important factor in the transport of GPI-anchored proteins from the endoplasmic reticulum to the Golgi. Defects in this gene are a cause an autosomal recessive form of cognitive impairment.

Overview

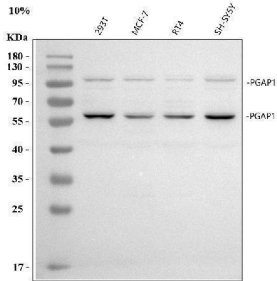
Product Name	Anti-PGAP1 Antibody Picoband®
Reactive Species	Human
Description	Boster Bio Anti-PGAP1 Antibody Picoband® catalog # A08640. Tested in ELISA, WB, Flow Cytometry applications. This antibody reacts with Human. The brand Picoband indicates this is a premium antibody that guarantees superior quality, high affinity, and strong signals with minimal background in Western blot applications. Only our best-performing antibodies are designated as Picoband, ensuring unmatched performance.
Application	ELISA, Flow Cytometry, WB
Clonality	Polyclonal
Formulation	Each vial contains 4 mg Trehalose, 0.9 mg NaCl, 0.2 mg Na ₂ HPO ₄ .
Storage Instructions	At -20°C for one year from date of receipt. After reconstitution, at 4°C for one month. It can also be aliquotted and stored frozen at -20°C for six months. Avoid repeated freezing and thawing.
Host	Rabbit
Uniprot ID	Q75T13

Technical Details

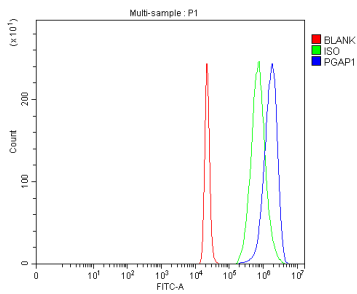
Immunogen	E.coli-derived human PGAP1 recombinant protein (Position: K166-R904). Human PGAP1 shares 89% and 88.5% amino acid (aa) sequence identity with mouse and rat PGAP1, respectively.
Recommended Detection Systems	Boster recommends Enhanced Chemiluminescent Kit with anti-Rabbit IgG (EK1002) for Western blot.
Cross Reactivity	No cross reactivity with other proteins.
Isotype	IgG
Form	Lyophilized
Concentration	Adding 0.2 ml of distilled water will yield a concentration of 500 µg/ml.

Purification	Immunogen affinity purified.
Suggested Dilutions	Western blot, 0.25-0.5 ug/ml, Human Flow Cytometry (Fixed), 1-3 ug/1x10 ⁶ cells, Human ELISA, 0.1-0.5 ug/ml, -

Anti-PGAP1 Antibody Picoband® (A08640) Images



Western blot analysis of PGAP1 using anti-PGAP1 antibody (A08640). Electrophoresis was performed on a 5-20% SDS-PAGE gel at 70V (Stacking gel) / 90V (Resolving gel) for 2-3 hours. The sample well of each lane was loaded with 30 ug of sample under reducing conditions. Lane 1: human 293T whole cell lysates, Lane 2: human MCF-7 whole cell lysates, Lane 3: human RT4 whole cell lysates, Lane 4: human SH-SY5Y whole cell lysates. After electrophoresis, proteins were transferred to a nitrocellulose membrane at 150 mA for 50-90 minutes. Blocked the membrane with 5% non-fat milk/TBS for 1.5 hour at RT. The membrane was incubated with rabbit anti-PGAP1 antigen affinity purified polyclonal antibody (Catalog # A08640) at 0.5 ug/mL overnight at 4°C, then washed with TBS-0.1%Tween 3 times with 5 minutes each and probed with a goat anti-rabbit IgG-HRP secondary antibody at a dilution of 1:5000 for 1.5 hour at RT. The signal is developed using an Enhanced Chemiluminescent detection (ECL) kit (Catalog # EK1002) with Tanon 5200 system. A specific band was detected for PGAP1 at approximately 100,58 kDa. The expected band size for PGAP1 is at 105,49-53,85-90 kDa.



Flow Cytometry analysis of 293T cells using anti-PGAP1 antibody (A08640). Overlay histogram showing 293T cells stained with A08640 (Blue line). To facilitate intracellular staining, cells were fixed with 4% paraformaldehyde and permeabilized with permeabilization buffer. The cells were blocked with 10% normal goat serum. And then incubated with rabbit anti-PGAP1 Antibody (A08640, 1 ug/1x10⁶ cells) for 30 min at 20°C. DyLight®488 conjugated goat anti-rabbit IgG (BA1127, 5-10 ug/1x10⁶ cells) was used as secondary antibody for 30 minutes at 20°C. Isotype control antibody (Green line) was rabbit IgG (1 ug/1x10⁶) used under the same conditions. Unlabelled sample (Red line) was also used as a control.

Submit a product review to Biocompare.com

Submit a review of this product to Biocompare.com to receive a \$20 Amazon.com giftcard! Your reviews help your fellow scientists make the right decisions. Thank you for your contribution.



Anti-PGAP1 Antibody

For Research Use Only. Not for use in diagnostic procedures.