

Anti-IL-1F8 IL36B Antibody

Catalog Number: A08643

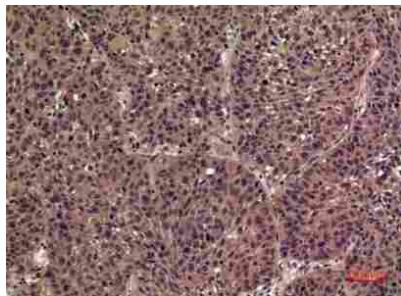
Overview

Product Name	Anti-IL-1F8 IL36B Antibody
Reactive Species	Human, Mouse
Description	Boster Bio Anti-IL-1F8 IL36B Antibody catalog # A08643. Tested in WB, IHC, IF, ELISA applications. This antibody reacts with Human, Mouse.
Application	ELISA, IF, IHC, WB
Clonality	Polyclonal
Formulation	Liquid in PBS containing 50% glycerol, 0.5% stabilizing protein and 0.02% sodium azide. This antibody is supplied in a stabilized formulation. Compatibility with conjugation reactions depends on the chemistry of the conjugation method used. For conjugation methods that are not compatible with the stabilizing components present in this formulation, a carrier-free antibody format is required.
Storage Instructions	Store at -20°C for one year. For short term storage and frequent use, store at 4°C for up to one month. Avoid repeated freeze-thaw cycles.
Host	Rabbit
Uniprot ID	Q9NZH7

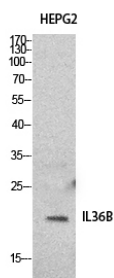
Technical Details

Immunogen	The antiserum was produced against synthesized peptide derived from the C-terminal region of human IL36B. AA range:111-160
Cross Reactivity	No cross reactivity with other proteins.
Isotype	IgG
Form	Liquid
Concentration	1 mg/ml
Purification	Immunogen affinity purified
Suggested Dilutions	WB 1:500-1:2000 IHC: 1:100-1:300 ELISA 1:20000 IF 1:50-200

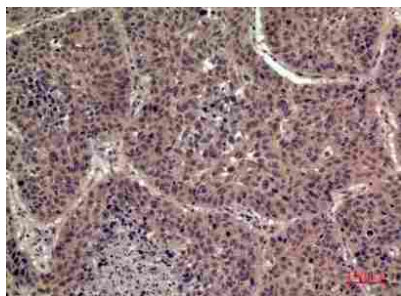
Anti-IL-1F8 IL36B Antibody (A08643) Images



Immunohistochemistry (IHC) analysis of paraffin-embedded Human Lung, antibody was diluted at 1:100.



Western Blot (WB) analysis of HepG2 cells using IL-1F8 Polyclonal antibody.



Immunohistochemistry (IHC) analysis of paraffin-embedded Human Lung, antibody was diluted at 1:100.

Submit a product review to Biocompare.com

Submit a review of this product to Biocompare.com to receive a \$20 Amazon.com giftcard! Your reviews help your fellow scientists make the right decisions. Thank you for your contribution.



Anti-IL-1F8 IL36B Antibody

For Research Use Only. Not for use in diagnostic procedures.