

Anti-KCTD15 Antibody

Catalog Number: A08651

About KCTD15

Childhood and adult obesity in the United States and to a lesser extent the rest of the world has increased dramatically over the past decade. Both environmental and genetic factors are involved in the onset and progression of weight gain. Recently, the potassium channel KCTD15 was identified as a genetic loci associated with higher than normal body mass index (BMI) in humans along with genes such as GNPDA2, MTCH2, FTO, and TMEM18. Further studies on single nucleotide polymorphisms (SNPs) in non-diabetic and diabetic patients showed that FTO was most strongly associated with obesity while MTCH2 and GNPDA2 were still significantly associated with higher than normal BMI levels. At least two isoforms of KCTD15 are known to exist.

Overview

Product Name	Anti-KCTD15 Antibody
Reactive Species	Human, Mouse, Rat
Description	Boster Bio Anti-KCTD15 Antibody (Catalog # A08651). Tested in ELISA, WB, IHC-P, IF applications. This antibody reacts with Human, Mouse, Rat.
Application	ELISA, IF, IHC-P, WB
Clonality	Polyclonal
Formulation	KCTD15 Antibody is supplied in PBS containing 0.02% sodium azide.
Storage Instructions	KCTD15 antibody can be stored at 4°C for three months and -20°C, stable for up to one year. Avoid repeated freeze-thaw cycles. Antibodies should not be exposed to prolonged high temperatures.
Host	Rabbit
Uniprot ID	Q96S11

Technical Details

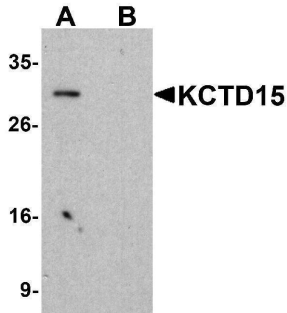
Immunogen	KCTD15 antibody was raised against a 16 amino acid synthetic peptide near the carboxy terminus of human KCTD15. The immunogen is located within the last 50 amino acids of KCTD15.
Predicted Reactive Species	Bovine
Isotype	IgG
Form	Liquid
Concentration	1 mg/mL
Purification	KCTD15 Antibody is affinity chromatography purified via peptide column.

Suggested Dilutions

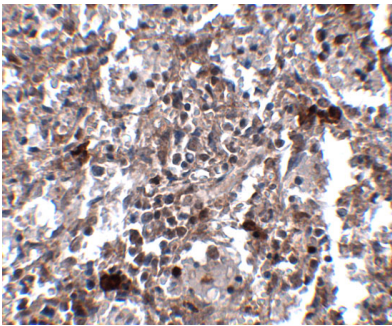
KCTD15 antibody can be used for detection of KCTD15 by Western blot at 0.5 - 1 ug/mL. Antibody can also be used for immunohistochemistry starting at 2.5 ug/mL. For immunofluorescence start at 20 ug/mL.

Antibody validated: Western Blot in human samples; Immunohistochemistry in human samples and Immunofluorescence in human samples. All other applications and species not yet tested. Optimal dilutions for each application should be determined by the researcher.

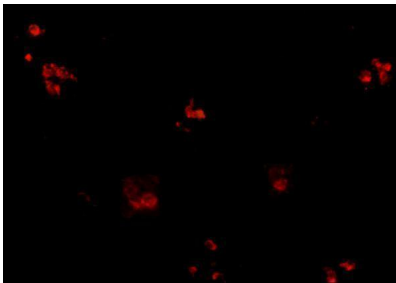
Anti-KCTD15 Antibody (A08651) Images



Western blot analysis of KCTD15 in HeLa cell lysate with KCTD15 antibody at 1ug/ml in (A) the absence and (B) the presence of blocking buffer.



Immunohistochemistry of KCTD15 in human spleen tissue with KCTD15 antibody at 2.5 ug/mL.



Immunofluorescence of KCTD15 in human spleen tissue with KCTD15 antibody at 20 ug/mL.

Submit a product review to [Biocompare.com](https://www.biocompare.com)

Submit a review of this product to [Biocompare.com](https://www.biocompare.com) to receive a \$20 Amazon.com giftcard! Your reviews help your fellow scientists make the right decisions. Thank you for your contribution.



Anti-KCTD15 Antibody

For Research Use Only. Not for use in diagnostic procedures.