

Anti-Mimitin NDUFAF2 Antibody

Catalog Number: A08718

About NDUFAF2

Mimitin, a small mitochondrial protein, whose transcription is directly stimulated by c-Myc, is highly expressed in 80% of esophageal squamous cell carcinomas (ESCC). Suppression of Mimitin expression by RNA interference had no effect in cancerous cell lines such as human cervical carcinoma or hepatocarcinoma cell lines, but caused a decrease in cell proliferation in human glioblastoma, embryonic lung fibroblastic cells, and ESCC, suggesting Mimitin may play a special role in these types of cells. Mimitin expression is also regulated by MAPK kinases and IL-1, but not through the NF-kappaB-related pathway. It will interact with the microtubular protein MAP1S and can affect the activities of caspase-3 and -7 in cells stimulated to develop apoptosis. Other experiments suggest that Mimitin also acts as a molecular chaperone for the assembly of the mitochondrial complex I.

Overview

Product Name	Anti-Mimitin NDUFAF2 Antibody
Reactive Species	Human
Description	Boster Bio Anti-Mimitin NDUFAF2 Antibody (Catalog # A08718). Tested in ELISA, WB, IF applications. This antibody reacts with Human.
Application	ELISA, IF, WB
Clonality	Polyclonal
Formulation	Mimitin Antibody is supplied in PBS containing 0.02% sodium azide.
Storage Instructions	Mimitin antibody can be stored at 4°C for three months and -20°C, stable for up to one year. Avoid repeated freeze-thaw cycles. Antibodies should not be exposed to prolonged high temperatures.
Host	Rabbit
Uniprot ID	Q8N183

Technical Details

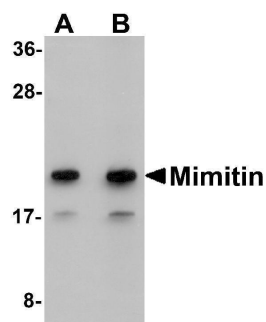
Immunogen	Mimitin antibody was raised against a 14 amino acid synthetic peptide from near the carboxy terminus of human Mimitin. The immunogen is located within the last 50 amino acids of Mimitin.
Predicted Reactive Species	Mouse, Rat
Isotype	IgG
Form	Liquid
Concentration	1 mg/mL
Purification	Mimitin Antibody is affinity chromatography purified via peptide column.

Suggested Dilutions

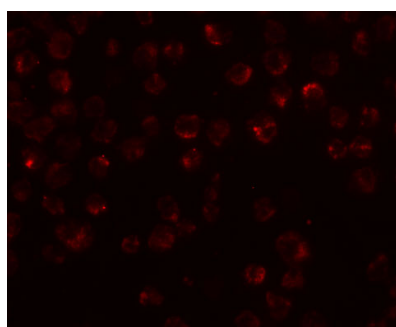
Mimitin antibody can be used for detection of Mimitin by Western blot at 1 - 2 ug/mL. Antibody can also be used for immunofluorescence starting at 20 ug/mL. For immunofluorescence start at 20 ug/mL.

Antibody validated: Western Blot in human samples and Immunofluorescence in human samples. All other applications and species not yet tested. Optimal dilutions for each application should be determined by the researcher.

Anti-Mimitin NDUFAF2 Antibody (A08718) Images



Western blot analysis of Mimitin in Raji cell lysate with Mimitin antibody at (A) 1 and (B) 2 ug/mL.



Immunofluorescence of Mimitin in Raji cells with Mimitin antibody at 20 ug/mL.

Submit a product review to [Biocompare.com](https://www.biocompare.com)

Submit a review of this product to [Biocompare.com](https://www.biocompare.com) to receive a \$20 Amazon.com giftcard! Your reviews help your fellow scientists make the right decisions. Thank you for your contribution.



Anti-Mimitin NDUFAF2 Antibody

For Research Use Only. Not for use in diagnostic procedures.