

## Anti-LRRFIP2 Antibody

Catalog Number: A08734

### About LRRFIP2

The leucine-rich repeat FLI-I-interacting protein 2 (LRRFIP2), like the related protein LRRFIP1, was identified in a yeast two-hybrid system through binding to the LRR domain of human FLI. It can activate the Wnt signaling pathway in cultured cells and is thought to be a component of the Wnt signaling pathway that modulates Wnt signaling through interactions with Disheveled to increase the cellular levels and transcription activity of beta-catenin. LRRFIP2 has recently been characterized as a positive regulator of the TLR4 signaling pathway for activating NF-kappaB during the early host response to LPS stimulation through binding to the TLR adaptor protein MyD88, and that this interaction with MyD88 is governed by phosphorylation of specific residues in LRRFIP2.

### Overview

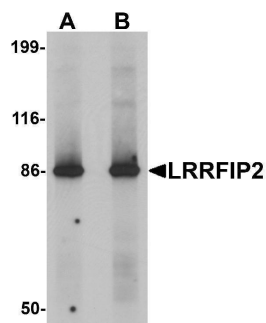
Product Name	Anti-LRRFIP2 Antibody
Reactive Species	Human, Mouse, Rat
Description	Boster Bio Anti-LRRFIP2 Antibody (Catalog # A08734). Tested in ELISA, WB, IHC-P, IF applications. This antibody reacts with Human, Mouse, Rat.
Application	ELISA, IF, IHC-P, WB
Clonality	Polyclonal
Formulation	LRRFIP2 Antibody is supplied in PBS containing 0.02% sodium azide.
Storage Instructions	LRRFIP2 antibody can be stored at 4°C for three months and -20°C, stable for up to one year. Avoid repeated freeze-thaw cycles. Antibodies should not be exposed to prolonged high temperatures.
Host	Rabbit
Uniprot ID	Q9Y608

### Technical Details

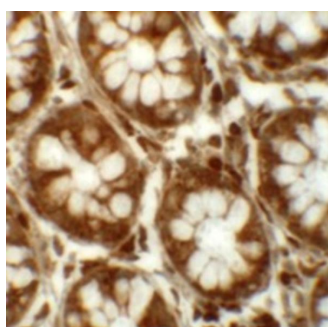
Immunogen	LRRFIP2 antibody was raised against a 17 amino acid synthetic peptide near the carboxy terminus of human LRRFIP2. The immunogen is located within amino acids 620 - 670 of LRRFIP2.
Predicted Reactive Species	Bovine
Cross Reactivity	Three isoforms of LRRFIP2 are known to exist; this antibody will recognize all three. LRRFIP2 antibody is predicted to not cross-react with other LRRFIP family members.
Isotype	IgG
Form	Liquid
Concentration	1 mg/mL

Purification	LRRFIP2 Antibody is affinity chromatography purified via peptide column.
Suggested Dilutions	LRRFIP2 antibody can be used for detection of LRRFIP2 by Western blot at 0.5 and 1 ug/mL. Antibody can also be used for immunohistochemistry starting at 5 ug/mL. For immunofluorescence start at 20 ug/mL. Antibody validated: Western Blot in rat samples; Immunohistochemistry in human samples and Immunofluorescence in human samples. All other applications and species not yet tested. Optimal dilutions for each application should be determined by the researcher.

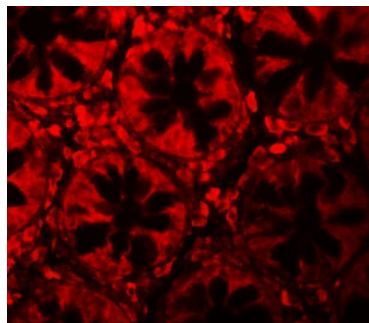
## Anti-LRRFIP2 Antibody (A08734) Images



Western blot analysis of LRRFIP2 in rat colon tissue lysate with LRRFIP2 antibody at (A) 0.5 and (B) 1 ug/mL.



Immunohistochemistry of LRRFIP2 in human colon tissue with LRRFIP2 antibody at 5 ug/mL.



Immunofluorescence of LRRFIP2 in human colon tissue with LRRFIP2 antibody at 20 ug/mL.

### Submit a product review to [Biocompare.com](https://www.biocompare.com)

Submit a review of this product to [Biocompare.com](https://www.biocompare.com) to receive a \$20 Amazon.com giftcard! Your reviews help your fellow scientists make the right decisions. Thank you for your contribution.



Anti-LRRFIP2 Antibody

For Research Use Only. Not for use in diagnostic procedures.