

## Anti-RWDD3 Antibody

Catalog Number: A08744

### About RWDD3

RWDD3 (RSUME), a small RWD-containing protein, has a central role in sumoylation by enhancing SUMO conjugation in the regulatory network of immune-inflammatory signals. RWDD3 increases IkappaBeta sumoylation and stability. In addition, RWDD3 inhibits TNF-alpha-induced kappaB-LUC (Luciferase) reporter activity, showing the functional consequence of IkappaBeta increased stability. RSUME-enhanced sumoylation of IkappaBeta leads to the inhibition of NF-kappaBeta activity on two well-known inflammatory genes, IL-8 and cyclooxygenase-2 (Cox-2) and therefore may also favor anti-inflammatory pathways. Expression of RWDD3 was induced under hypoxic conditions and it has a potential role during vascularization. Both BMP-4 and RWDD3 may be interesting targets for inhibiting steps involved in pituitary tumorigenesis.

### Overview

Product Name	Anti-RWDD3 Antibody
Reactive Species	Human, Mouse, Rat
Description	Boster Bio Anti-RWDD3 Antibody (Catalog # A08744). Tested in ELISA, WB applications. This antibody reacts with Human, Mouse, Rat.
Application	ELISA, WB
Clonality	Polyclonal
Formulation	RWDD3 Antibody is supplied in PBS containing 0.02% sodium azide.
Storage Instructions	RWDD3 antibody can be stored at 4°C for three months and -20°C, stable for up to one year. Avoid repeated freeze-thaw cycles. Antibodies should not be exposed to prolonged high temperatures.
Host	Rabbit
Uniprot ID	Q9Y3V2

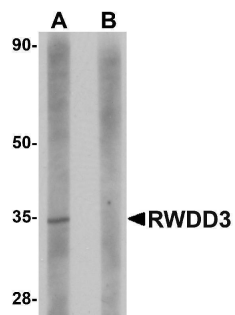
### Technical Details

Immunogen	RWDD3 antibody was raised against a 15 amino acid synthetic peptide from near the carboxy terminus of human RWDD3. The immunogen is located within the last 50 amino acids of RWDD3.
Predicted Reactive Species	Bovine
Isotype	IgG
Form	Liquid
Concentration	1 mg/mL
Purification	RWDD3 Antibody is affinity chromatography purified via peptide column.

Suggested Dilutions

RWDD3 antibody can be used for detection of RWDD3 by Western blot at 1 ug/mL.  
Antibody validated: Western Blot in rat samples. All other applications and species not yet tested.  
Optimal dilutions for each application should be determined by the researcher.

## Anti-RWDD3 Antibody (A08744) Images



Western blot analysis of RWDD3 in rat kidney tissue lysate with RWDD3 antibody at 1 ug/mL in (A) the absence and (B) the presence of blocking peptide.

## Submit a product review to Biocompare.com

Submit a review of this product to Biocompare.com to receive a \$20 Amazon.com giftcard! Your reviews help your fellow scientists make the right decisions. Thank you for your contribution.



### Anti-RWDD3 Antibody

For Research Use Only. Not for use in diagnostic procedures.