

## Anti-RBM6 Antibody Picoband®

Catalog Number: A08776-3

### About RBM6

Enables RNA binding activity. Predicted to be involved in mRNA splicing, via spliceosome. Predicted to be active in nucleus.

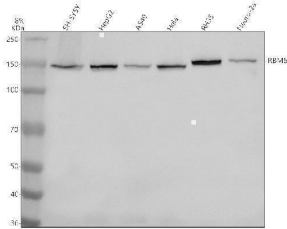
### Overview

Product Name	Anti-RBM6 Antibody Picoband®
Reactive Species	Human, Mouse, Rat
Description	Boster Bio Anti-RBM6 Antibody Picoband® catalog # A08776-3. Tested in WB, ICC, IF, IP, Flow Cytometry applications. This antibody reacts with Human, Mouse, Rat. The brand Picoband indicates this is a premium antibody that guarantees superior quality, high affinity, and strong signals with minimal background in Western blot applications. Only our best-performing antibodies are designated as Picoband, ensuring unmatched performance.
Application	Flow Cytometry, IP, IF, ICC, WB
Clonality	Polyclonal
Formulation	Each vial contains 4 mg Trehalose, 0.9 mg NaCl, 0.2 mg Na <sub>2</sub> HPO <sub>4</sub> .
Storage Instructions	At -20°C for one year from date of receipt. After reconstitution, at 4°C for one month. It can also be aliquotted and stored frozen at -20°C for six months. Avoid repeated freezing and thawing.
Host	Rabbit
Uniprot ID	P78332

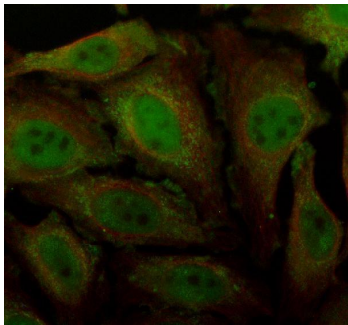
### Technical Details

Immunogen	A synthetic peptide corresponding to a sequence at the C-terminus of human RBM6.
Form	Lyophilized
Concentration	Adding 0.2 ml of distilled water will yield a concentration of 500 ug/ml.
Purification	Immunogen affinity purified.
Suggested Dilutions	Western blot, 0.25-0.5 ug/ml, Human, Mouse, Rat Immunocytochemistry/Immunofluorescence, 5 ug/ml, Human Immunoprecipitation, 0.5-2 ug/ml, Human Flow Cytometry (Fixed), 1-3 ug/1x10 <sup>6</sup> cells, Human

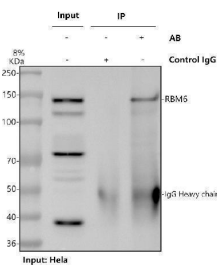
## Anti-RBM6 Antibody Picoband® (A08776-3) Images



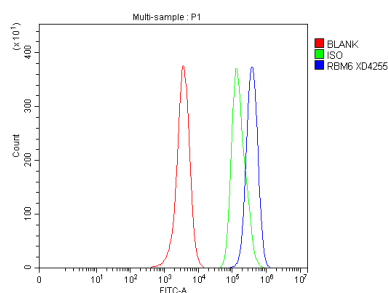
Western blot analysis of RBM6 using anti-RBM6 antibody (A08776-3). Electrophoresis was performed on a 8% SDS-PAGE gel at 80V (Stacking gel) / 120V (Resolving gel) for 2 hours. The sample well of each lane was loaded with 30 ug of sample under reducing conditions. Lane 1: human SH-SY5Y whole cell lysates, Lane 2: human HepG2 whole cell lysates, Lane 3: human A549 whole cell lysates, Lane 4: human Hela whole cell lysates, Lane 5: rat RH35 whole cell lysates, Lane 6: mouse Neuro-2a whole cell lysates. After electrophoresis, proteins were transferred to a nitrocellulose membrane at 150 mA for 50-90 minutes. Blocked the membrane with 5% non-fat milk/TBS for 1.5 hour at RT. The membrane was incubated with rabbit anti-RBM6 antigen affinity purified polyclonal antibody (A08776-3) at 0.5 ug/mL overnight at 4°C, then washed with TBS-0.1%Tween 3 times with 5 minutes each and probed with a goat anti-rabbit IgG-HRP secondary antibody at a dilution of 1:5000 for 1.5 hour at RT. The signal is developed using an ECL Plus Western Blotting Substrate (Catalog # AR1196-200) with Tanon 5200 system. A specific band was detected for RBM6 at approximately 150 kDa. The expected band size for RBM6 is at 129 kDa.



IF analysis of RBM6 using anti-RBM6 antibody (A08776-3) and anti-Alpha Tubulin antibody (M03989-3). RBM6 was detected in an immunocytochemical section of HeLa cells. Enzyme antigen retrieval was performed using IHC enzyme antigen retrieval reagent (AR0022) for 15 mins. The cells were blocked with 10% goat serum. And then incubated with 5 ug/mL rabbit anti-RBM6 Antibody (A08776-3) and mouse anti-Alpha Tubulin antibody (M03989-3) overnight at 4°C. Fluoro488 Conjugated Goat Anti-Rabbit IgG (BA1127) and Cy3 Conjugated Goat Anti-Mouse IgG (BA1031) were used as secondary antibody at 1:500 dilution and incubated for 30 minutes at 37°C. Visualize using a fluorescence microscope and filter sets appropriate for the label used.



Immunoprecipitating RBM6 in HeLa whole cell lysate. Western blot analysis of RBM6 using anti-RBM6 antibody (A08776-3). Lane 1: HeLa whole cell lysates (30ug), Lane 2: Rabbit control IgG instead of anti-RBM6 antibody in HeLa whole cell lysate, Lane 3: anti-RBM6 antibody (2ug) + HeLa whole cell lysate (500ug). After electrophoresis, proteins were transferred to a membrane. Then the membrane was incubated with rabbit anti-RBM6 antigen affinity purified polyclonal antibody (A08776-3) at a dilution of 0.5 ug/mL and probed with a goat anti-rabbit IgG-HRP secondary antibody (Catalog # BA1054). The signal is developed using ECL Plus Western Blotting Substrate (Catalog # AR1197). A specific band was detected for RBM6 at approximately 150 kDa. The expected band size for RBM6 is at 129 kDa.



Flow Cytometry analysis of HeLa cells using anti-RBM6 antibody (A08776-3). Overlay histogram showing HeLa cells stained with A08776-3 (Blue line). To facilitate intracellular staining, cells were fixed with 4% paraformaldehyde and permeabilized with permeabilization buffer. The cells were blocked with 10% normal goat serum. And then incubated with rabbit anti-RBM6 Antibody (A08776-3, 1 ug/1x10<sup>6</sup> cells) for 30 min at 20°C. Fluoro488 conjugated goat anti-rabbit IgG (BA1127, 5-10 ug/1x10<sup>6</sup> cells) was used as secondary antibody for 30 minutes at 20°C. Isotype control antibody (Green line) was rabbit IgG (1 ug/1x10<sup>6</sup>) used under the same conditions. Unlabelled sample without incubation with primary antibody and secondary antibody (Red line) was used as a blank control.

## Submit a product review to Biocompare.com

Submit a review of this product to Biocompare.com to receive a \$20 Amazon.com giftcard! Your reviews help your fellow scientists make the right decisions. Thank you for your contribution.



### Anti-RBM6 Antibody

For Research Use Only. Not for use in diagnostic procedures.