

Anti-NEDL2 HECW2 Antibody (Internal)

Catalog Number: A08779

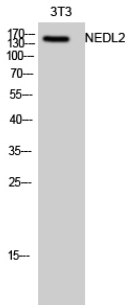
Overview

Product Name	Anti-NEDL2 HECW2 Antibody (Internal)
Reactive Species	Human, Mouse
Description	Boster Bio Anti-NEDL2 HECW2 Antibody (Internal) catalog # A08779. Tested in ELISA, WB applications. This antibody reacts with Human.
Application	ELISA, WB
Clonality	Polyclonal
Formulation	Liquid in PBS containing 50% glycerol, 0.5% stabilizing protein and 0.02% sodium azide. This antibody is supplied in a stabilized formulation. Compatibility with conjugation reactions depends on the chemistry of the conjugation method used. For conjugation methods that are not compatible with the stabilizing components present in this formulation, a carrier-free antibody format is required.
Storage Instructions	Store at -20°C for one year. For short term storage and frequent use, store at 4°C for up to one month. Avoid repeated freeze-thaw cycles.
Host	Rabbit
Uniprot ID	Q9P2P5

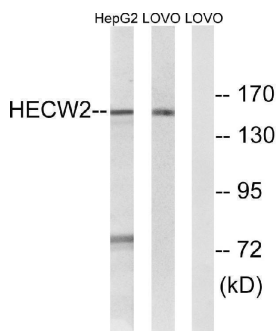
Technical Details

Immunogen	The antiserum was produced against synthesized peptide derived from human HECW2. AA range:481-530
Isotype	IgG
Form	Liquid
Concentration	1 mg/ml
Purification	The antibody was affinity-purified from rabbit antiserum by affinity-chromatography using epitope-specific immunogen.
Suggested Dilutions	WB 1:500-1:2000 ELISA 1:10000

Anti-NEDL2 HECW2 Antibody (Internal) (A08779) Images



Western Blot analysis of 3T3 cells using NEDL2 Polyclonal Antibody diluted at 1:1000



Western blot analysis of lysates from LOVO and HepG2 cells, using HECW2 Antibody. The lane on the right is blocked with the synthesized peptide.

Submit a product review to [Biocompare.com](https://www.biocompare.com)

Submit a review of this product to [Biocompare.com](https://www.biocompare.com) to receive a \$20 Amazon.com giftcard! Your reviews help your fellow scientists make the right decisions. Thank you for your contribution.



Anti-NEDL2 HECW2 Antibody (Internal)

For Research Use Only. Not for use in diagnostic procedures.