

Anti-IP6K2 (L188) Antibody

Catalog Number: A08792-1

About IP6K2

Converts inositol hexakisphosphate (InsP6) to diphosphoinositol pentakisphosphate (InsP7/PP-InsP5). Converts 1,3,4,5,6-pentakisphosphate (InsP5) to PP-InsP4.

Saiardi A., J. Biol. Chem. 276:39179-39185(2001).

The MGC Project Team; Genome Res. 14:2121-2127(2004).

Saiardi A., Curr. Biol. 9:1323-1326(1999).

Overview

Product Name	Anti-IP6K2 (L188) Antibody
Reactive Species	Human, Mouse, Rat
Description	Boster Bio Anti-IP6K2 (L188) Antibody catalog # A08792-1. Tested in WB,IHC,IF applications. This antibody reacts with Human,Mouse,Rat.
Application	IF, IHC, WB
Clonality	Polyclonal
Formulation	Rabbit IgG, 1mg/ml in PBS with 0.02% sodium azide, 50% glycerol, pH7.2
Storage Instructions	Store at -20°C for one year. For short term storage and frequent use, store at 4°C for up to one month. Avoid repeated freeze-thaw cycles.
Host	Rabbit
Uniprot ID	Q9UHH9

Technical Details

Immunogen	Synthesized peptide derived from internal of human IP6K2.
Predicted Reactive Species	Chimpanzee, Drosophila, Macaque
Isotype	IgG
Form	Liquid
Concentration	1 mg/ml
Purification	The antibody was affinity-purified from rabbit antiserum by affinity-chromatography using epitope-specific immunogen and the purity is > 95% (by SDS-PAGE).

Suggested Dilutions

Dilute the sample so that the expected range of concentrations fall within the detection range of this kit.

If the expected range of concentration is unknown, a pilot test should be conducted to decide the optimal dilution ratio for your samples.

Some PubMed article(s) citing the expression level of this target are as follows:

Boster Bio's internal QC testing used:

WB: 1:500-1:1000

IHC: 1:50-1:200

IF: 1:50-1:200

Anti-IP6K2 (L188) Antibody (A08792-1) Images

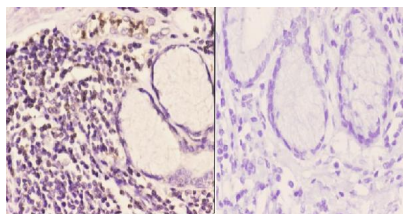


Figure 2. Immunohistochemistry validation of IP6K2 using Anti-IP6K2 (L188) Antibody (A08792-1).

Immunohistochemistry (IHC) analyzes of IP6K2 (L188) pAb in paraffin-embedded human esophageal carcinoma tissue at 1:50, showing cytoplasmic and nucleus staining. Negative control (the right) Using PBS instead of primary antibody

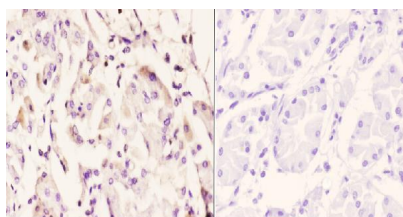


Figure 3. Immunohistochemistry validation of IP6K2 using Anti-IP6K2 (L188) Antibody (A08792-1).

Immunohistochemistry (IHC) analyzes of IP6K2 (L188) pAb in paraffin-embedded human stomach carcinoma tissue at 1:50, showing cytoplasmic and nucleus staining. Negative control (the right) Using PBS instead of primary antibody

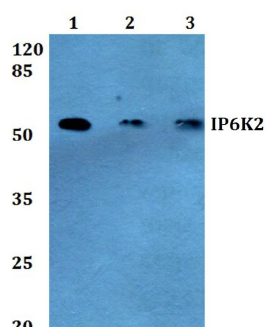


Figure 1. Western blotting validation for Anti-IP6K2 (L188) Antibody A08792-1

Western blot (WB) analysis of IP6K2 (L188) pAb at 1:500 dilution

Lane1:CT26 whole cell lysate(40ug)

Lane2:C6 whole cell lysate(40ug)

Lane3:Panc1 whole cell lysate(40ug)

Lane4:HCT116 whole cell lysate(40ug)

Lane5:A549 whole cell lysate(40ug)

Electrophoresis was performed on a SDS-PAGE gel. To determine SDS-PAGE gel concentration

Submit a product review to Biocompare.com

Submit a review of this product to Biocompare.com to receive a \$20 Amazon.com giftcard! Your reviews help your fellow scientists make the right decisions. Thank you for your contribution.



Anti-IP6K2 (L188) Antibody