

Anti-Plxdc2 Antibody

Catalog Number: A08798

About PLXDC2

Plxdc2, also known as Tumor endothelial marker 7-related (TEM7R) encodes a protein with 57% amino acid identity to TEM7, the most abundant tumor endothelial marker. Plxdc2 is strongly expressed in the endothelial cells of the tumor stroma, but not in the endothelial cells of normal colonic tissue. Plxdc2 is also expressed at high levels in vessels of some normal tissues, with highest expression in muscle and lung. Plxdc2 and TEM7 may be important for tumor angiogenesis in humans. Cortactin was identified as a protein capable of binding to the extracellular region of both TEM7 and Plxdc2, and may provide new opportunities for the delivery of therapeutic and imaging agents to the vessels of solid tumors.

Overview

Product Name	Anti-Plxdc2 Antibody
Reactive Species	Human, Mouse, Rat
Description	Boster Bio Anti-Plxdc2 Antibody (Catalog # A08798). Tested in ELISA, WB, IHC-P, IF applications. This antibody reacts with Human, Mouse, Rat.
Application	ELISA, IF, IHC-P, WB
Clonality	Polyclonal
Formulation	Plxdc2 Antibody is supplied in PBS containing 0.02% sodium azide.
Storage Instructions	Plxdc2 antibody can be stored at 4°C for three months and -20°C, stable for up to one year. Avoid repeated freeze-thaw cycles. Antibodies should not be exposed to prolonged high temperatures.
Host	Rabbit
Uniprot ID	Q6UX71

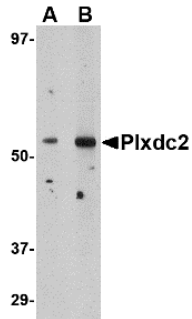
Technical Details

Immunogen	Plxdc2 antibody was raised against a 18 amino acid synthetic peptide from near the amino terminus of human Plxdc2. The immunogen is located within amino acids 40 - 90 of Plxdc2.
Predicted Reactive Species	Bovine
Isotype	IgG
Form	Liquid
Concentration	1 mg/mL
Purification	Plxdc2 Antibody is affinity chromatography purified via peptide column.
Suggested Dilutions	Plxdc2 antibody can be used for detection of Plxdc2 by Western blot at 1 and 2 ug/mL. Antibody can also be used for immunohistochemistry starting at 2.5 ug/mL. For immunofluorescence start at 20

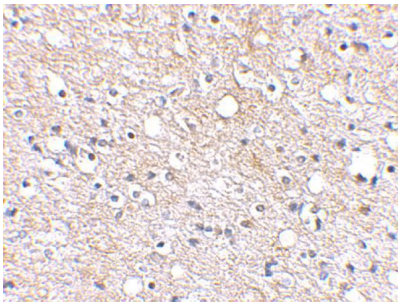
ug/mL.

Antibody validated: Western Blot in human and mouse samples; Immunohistochemistry in human samples and Immunofluorescence in human samples. All other applications and species not yet tested. Optimal dilutions for each application should be determined by the researcher.

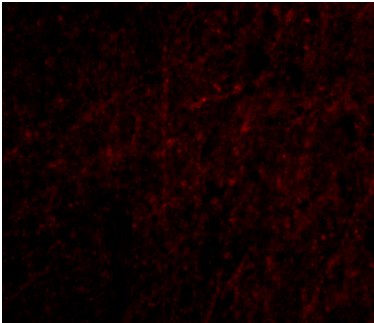
Anti-Plxdc2 Antibody (A08798) Images



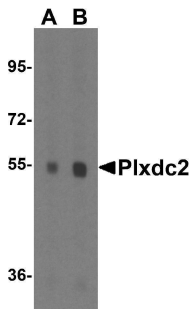
Western blot analysis of Plxdc2 in human brain tissue lysate with Plxdc2 antibody at (A) 0.5 (B) 1 ug/mL.



Immunohistochemical staining of human brain tissue using Plxdc2 antibody at 2.5 ug/mL.



Immunofluorescence of Plxdc2 in Human Brain cells with Plxdc2 antibody at 20 ug/mL.



Western blot analysis of Plxdc2 in mouse cerebrum tissue lysate with Plxdc2 antibody at (A) 1 and (B) 2 ug/mL.

Submit a product review to [Biocompare.com](https://www.biocompare.com)

Submit a review of this product to [Biocompare.com](https://www.biocompare.com) to receive a \$20 Amazon.com giftcard! Your reviews help your fellow scientists make the right decisions. Thank you for your contribution.



Anti-Plxdc2 Antibody

For Research Use Only. Not for use in diagnostic procedures.