

Anti-SEZ6L Antibody Picoband®

Catalog Number: A08803-1

About SEZ6L

Seizure 6-like protein is a protein that in humans is encoded by the SEZ6L gene. SEZ6L (Seizure 6-Like protein; also BSRP-B in rodent) is a 200 kDa member of the SEZ6 family of proteins. It is expressed in the plasma membrane and ER of CNS neurons and lung bronchiolar epithelium, and likely regulates PKC alpha activation. Mature human SEZ6L is a 996 amino acid (aa) type I transmembrane protein. It contains a 930 aa extracellular domain (ECD) (aa 29-958) plus a 45 aa cytoplasmic tail. The ECD shows three CUB domains and five short consensus repeats (SCRs). There are multiple isoforms possible for SEZ6L. One shows a deletion of aa 933-943, and a second shows the same deletion coupled to a Thr substitution for aa 803-867. A third isoform contains a Leu substitution for aa 867-943. An alternative start site is reported at Met228. This start site may occur individually, or be accompanied by a deletion of aa 932-944, the same deletion of aa 932-944 coupled to a Thr substitution for aa 803-867, or a dual deletion of aa 869-945 and 1016-1024. Over aa 29-958, human BSRP-B is 80% aa identical to mouse BSRP-B.

Overview

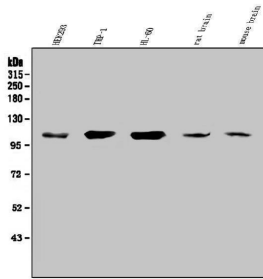
Product Name	Anti-SEZ6L Antibody Picoband®
Reactive Species	Human, Mouse, Rat
Description	Boster Bio Anti-SEZ6L Antibody Picoband® catalog # A08803-1. Tested in ELISA, Flow Cytometry, IF, ICC, WB applications. This antibody reacts with Human, Mouse, Rat. The brand Picoband indicates this is a premium antibody that guarantees superior quality, high affinity, and strong signals with minimal background in Western blot applications. Only our best-performing antibodies are designated as Picoband, ensuring unmatched performance.
Application	ELISA, Flow Cytometry, IF, ICC, WB
Clonality	Polyclonal
Formulation	Each vial contains 4 mg Trehalose, 0.9 mg NaCl and 0.2 mg Na ₂ HPO ₄ .
Storage Instructions	Store at -20°C for one year from date of receipt. After reconstitution, at 4°C for one month. It can also be aliquotted and stored frozen at -20°C for six months. Avoid repeated freeze-thaw cycles.
Host	Rabbit
Uniprot ID	Q9BYH1

Technical Details

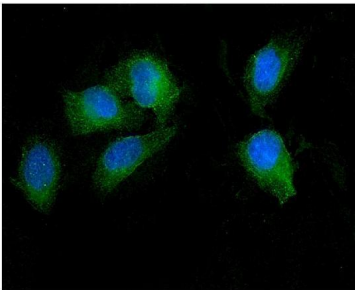
Immunogen	E.coli-derived human SEZ6L recombinant protein (Position: E662-E953).
Recommended Detection Systems	Boster recommends Enhanced Chemiluminescent Kit with anti-Rabbit IgG (EK1002) for Western blot, and HRP Conjugated anti-Rabbit IgG Super Vision Assay Kit (SV0002-1) for ICC.
Cross Reactivity	No cross-reactivity with other proteins.
Isotype	Rabbit IgG

Form	Lyophilized
Concentration	Adding 0.2 ml of distilled water will yield a concentration of 500 ug/ml.
Purification	Immunogen affinity purified.
Suggested Dilutions	Western blot, 0.25-0.5ug/ml, Human, Mouse, Rat Immunocytochemistry/Immunofluorescence, 5ug/ml, Human Flow Cytometry (Fixed), 1-3ug/1x10 ⁶ cells, Human ELISA, 0.1-0.5ug/ml, -

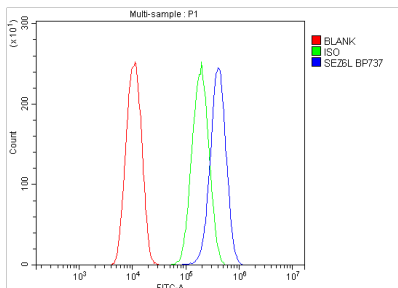
Anti-SEZ6L Antibody Picoband® (A08803-1) Images



Western blot analysis of SEZ6L using anti-SEZ6L antibody (A08803-1). Electrophoresis was performed on a 5-20% SDS-PAGE gel at 70V (Stacking gel) / 90V (Resolving gel) for 2-3 hours. The sample well of each lane was loaded with 50ug of sample under reducing conditions. Lane 1: human HEK293 whole cell lysates, Lane 2: human THP-1 whole cell lysates, Lane 3: human HL-60 whole cell lysates, Lane 4: rat brain tissue lysates, Lane 5: mouse brain tissue lysates. After Electrophoresis, proteins were transferred to a Nitrocellulose membrane at 150mA for 50-90 minutes. Blocked the membrane with 5% Non-fat Milk/ TBS for 1.5 hour at RT. The membrane was incubated with rabbit anti-SEZ6L antigen affinity purified polyclonal antibody (Catalog # A08803-1) at 0.5 ug/mL overnight at 4°C, then washed with TBS-0.1%Tween 3 times with 5 minutes each and probed with a goat anti-rabbit IgG-HRP secondary antibody at a dilution of 1:5000 for 1.5 hour at RT. The signal is developed using an Enhanced Chemiluminescent detection (ECL) kit (Catalog # EK1002) with Tanon 5200 system. A specific band was detected for SEZ6L at approximately 112KD. The expected band size for SEZ6L is at 112KD.



IF analysis of SEZ6L using anti-SEZ6L antibody (A08803-1). SEZ6L was detected in immunocytochemical section of U2OS cells. Enzyme antigen retrieval was performed using IHC enzyme antigen retrieval reagent (AR0022) for 15 mins. The cells were blocked with 10% goat serum. And then incubated with 5ug/mL rabbit anti-SEZ6L Antibody (A08803-1) overnight at 4°C. DyLight®488 Conjugated Goat Anti-Rabbit IgG (BA1127) was used as secondary antibody at 1:100 dilution and incubated for 30 minutes at 37°C. The section was counterstained with DAPI. Visualize using a fluorescence microscope and filter sets appropriate for the label used.



Flow Cytometry analysis of U2OS cells using anti-SEZ6L antibody (A08803-1). Overlay histogram showing U2OS cells stained with A08803-1 (Blue line). To facilitate intracellular staining, cells were fixed with 4% paraformaldehyde and permeabilized with permeabilization buffer. The cells were blocked with 10% normal goat serum. And then incubated with rabbit anti-SEZ6L Antibody (A08803-1, 1ug/1x10⁶ cells) for 30 min at 20°C. DyLight®488 conjugated goat anti-rabbit IgG (BA1127, 5-10ug/1x10⁶ cells) was used as secondary antibody for 30 minutes at 20°C. Isotype control antibody (Green line) was rabbit IgG (1ug/1x10⁶) used under the same conditions. Unlabelled sample without incubation with primary antibody and secondary antibody (Red line) was used as a blank control.

Submit a review of this product to Biocompare.com to receive a \$20 Amazon.com giftcard! Your reviews help your fellow scientists make the right decisions. Thank you for your contribution.



Anti-SEZ6L Antibody

For Research Use Only. Not for use in diagnostic procedures.