

Anti-DNA Pol mu Antibody

Catalog Number: A08812

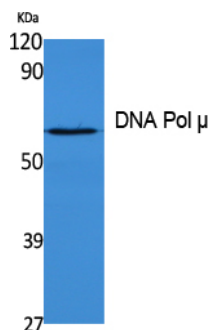
Overview

Product Name	Anti-DNA Pol mu Antibody
Reactive Species	Human, Mouse
Description	Boster Bio Anti-DNA Pol mu Antibody catalog # A08812. Tested in ELISA, WB applications. This antibody reacts with Human.
Application	ELISA, WB
Clonality	Polyclonal
Formulation	Liquid in PBS containing 50% glycerol, 0.5% stabilizing protein and 0.02% sodium azide. This antibody is supplied in a stabilized formulation. Compatibility with conjugation reactions depends on the chemistry of the conjugation method used. For conjugation methods that are not compatible with the stabilizing components present in this formulation, a carrier-free antibody format is required.
Storage Instructions	Store at -20°C for one year. For short term storage and frequent use, store at 4°C for up to one month. Avoid repeated freeze-thaw cycles.
Host	Rabbit
Uniprot ID	Q9NP87

Technical Details

Immunogen	Synthesized peptide derived from DNA Pol u . at AA range: 210-290
Isotype	IgG
Form	Liquid
Concentration	1 mg/ml
Purification	The antibody was affinity-purified from rabbit antiserum by affinity-chromatography using epitope-specific immunogen.
Suggested Dilutions	WB 1:500-1:2000 ELISA 1:40000

Anti-DNA Pol mu Antibody (A08812) Images



Western blotting validation for Anti-DNA Pol mu Antibody A08812 Western Blot (WB) analysis of extracts from K562 cells

Submit a product review to Biocompare.com

Submit a review of this product to Biocompare.com to receive a \$20 Amazon.com giftcard! Your reviews help your fellow scientists make the right decisions. Thank you for your contribution.



Anti-DNA Pol mu Antibody

For Research Use Only. Not for use in diagnostic procedures.