

## Anti-POLM Antibody Picoband®

Catalog Number: A08812-2

### About POLM

Predicted to enable DNA-directed DNA polymerase activity. Predicted to be involved in double-strand break repair via nonhomologous end joining. Predicted to act upstream of or within B cell differentiation and somatic hypermutation of immunoglobulin genes. Predicted to be located in nucleoplasm. Predicted to be active in nucleus.

### Overview

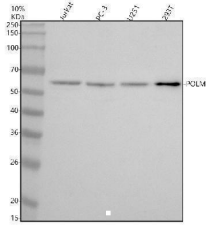
Product Name	Anti-POLM Antibody Picoband®
Reactive Species	Human
Description	Boster Bio Anti-POLM Antibody Picoband® catalog # A08812-2. Tested in WB, IP, ELISA applications. This antibody reacts with Human. The brand Picoband indicates this is a premium antibody that guarantees superior quality, high affinity, and strong signals with minimal background in Western blot applications. Only our best-performing antibodies are designated as Picoband, ensuring unmatched performance.
Application	ELISA, IP, WB
Clonality	Polyclonal
Formulation	Each vial contains 4 mg Trehalose, 0.9 mg NaCl, 0.2 mg Na <sub>2</sub> HPO <sub>4</sub> .
Storage Instructions	At -20°C for one year from date of receipt. After reconstitution, at 4°C for one month. It can also be aliquotted and stored frozen at -20°C for six months. Avoid repeated freezing and thawing.
Host	Rabbit
Uniprot ID	Q9NP87

### Technical Details

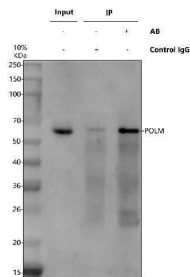
Immunogen	E.coli-derived human POLM recombinant protein (Position: E36-H481). Human POLM shares 76.5% amino acid (aa) sequence identity with mouse POLM.
Form	Lyophilized
Concentration	Adding 0.2 ml of distilled water will yield a concentration of 500 ug/ml.
Purification	Immunogen affinity purified.
Suggested Dilutions	Western blot, 0.25-0.5 ug/ml, Human Immunoprecipitation, 0.5-2 ug/ml, Human ELISA, 0.1-0.5 ug/ml



## Anti-POLM Antibody Picoband® (A08812-2) Images



Western blot analysis of POLM using anti-POLM antibody (A08812-2). Electrophoresis was performed on a 10% SDS-PAGE gel at 80V (Stacking gel) / 120V (Resolving gel) for 2 hours. The sample well of each lane was loaded with 30 ug of sample under reducing conditions. Lane 1: human Jurkat whole cell lysates, Lane 2: human PC-3 whole cell lysates, Lane 3: human U251 whole cell lysates, Lane 4: human 293T whole cell lysates. After electrophoresis, proteins were transferred to a nitrocellulose membrane at 150 mA for 50-90 minutes. Blocked the membrane with 5% non-fat milk/TBS for 1.5 hour at RT. The membrane was incubated with rabbit anti-POLM antigen affinity purified polyclonal antibody (A08812-2) at 0.5 ug/mL overnight at 4°C, then washed with TBS-0.1% Tween 3 times with 5 minutes each and probed with a goat anti-rabbit IgG-HRP secondary antibody at a dilution of 1:5000 for 1.5 hour at RT. The signal is developed using an ECL Plus Western Blotting Substrate (Catalog # AR1196-200) with Tanon 5200 system. A specific band was detected for POLM at approximately 55 kDa. The expected band size for POLM is at 55 kDa.



Immunoprecipitating POLM in 293T whole cell lysate. Western blot analysis of POLM using anti-POLM antibody (A08812-2). Lane 1: 293T whole cell lysates (30ug), Lane 2: Rabbit control IgG instead of anti-POLM antibody in 293T whole cell lysate, Lane 3: anti-POLM antibody (2ug) + 293T whole cell lysate (500ug). After electrophoresis, proteins were transferred to a membrane. Then the membrane was incubated with rabbit anti-POLM antigen affinity purified polyclonal antibody (A08812-2) at a dilution of 0.5 ug/mL and probed with a mouse anti-rabbit IgG-HRP secondary antibody (Catalog # BM2007). The signal is developed using ECL Plus Western Blotting Substrate (Catalog # AR1197). A specific band was detected for POLM at approximately 55 kDa. The expected band size for POLM is at 55 kDa.

### Submit a product review to [Biocompare.com](https://www.biocompare.com)

Submit a review of this product to [Biocompare.com](https://www.biocompare.com) to receive a \$20 Amazon.com giftcard! Your reviews help your fellow scientists make the right decisions. Thank you for your contribution.



### Anti-POLM Antibody

For Research Use Only. Not for use in diagnostic procedures.