

## Anti-FRMD6/Willin Antibody Picoband®

Catalog Number: A08826-2

### About FRMD6

FERM domain-containing protein 6 is a protein that in humans is encoded by the FRMD6 gene. It is mapped to 14q22.1.

### Overview

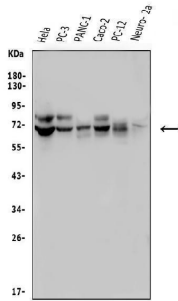
Product Name	Anti-FRMD6/Willin Antibody Picoband®
Reactive Species	Human, Mouse, Rat
Description	Boster Bio Anti-FRMD6/Willin Antibody Picoband® catalog # A08826-2. Tested in ELISA, Flow Cytometry, IF, IHC, ICC, WB applications. This antibody reacts with Human, Mouse, Rat. The brand Picoband indicates this is a premium antibody that guarantees superior quality, high affinity, and strong signals with minimal background in Western blot applications. Only our best-performing antibodies are designated as Picoband, ensuring unmatched performance.
Application	ELISA, Flow Cytometry, IF, IHC, ICC, WB
Clonality	Polyclonal
Formulation	Each vial contains 4mg Trehalose, 0.9mg NaCl, 0.2mg Na <sub>2</sub> HPO <sub>4</sub> , 0.05mg NaN <sub>3</sub> .
Storage Instructions	Store at -20°C for one year from date of receipt. After reconstitution, at 4°C for one month. It can also be aliquotted and stored frozen at -20°C for six months. Avoid repeated freeze-thaw cycles.
Host	Rabbit
Uniprot ID	Q96NE9

### Technical Details

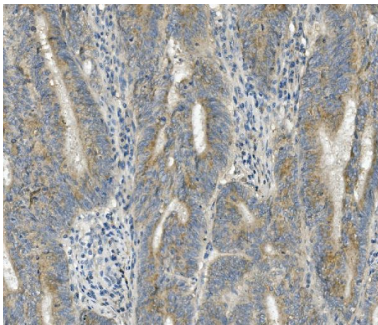
Immunogen	E.coli-derived human FRMD6/Willin recombinant protein (Position: M1-E95).
Recommended Detection Systems	Boster recommends Enhanced Chemiluminescent Kit with anti-Rabbit IgG (EK1002) for Western blot, and HRP Conjugated anti-Rabbit IgG Super Vision Assay Kit (SV0002-1) for IHC(P) and ICC.
Cross Reactivity	No cross-reactivity with other proteins.
Isotype	Rabbit IgG
Form	Lyophilized
Concentration	Adding 0.2 ml of distilled water will yield a concentration of 500 ug/ml.
Purification	Immunogen affinity purified.
Suggested Dilutions	Western blot, 0.25-0.5ug/ml, Human, Mouse, Rat Immunohistochemistry (Paraffin-embedded Section), 0.5-1ug/ml, Human

Immunocytochemistry/Immunofluorescence, 2ug/ml, Human  
Flow Cytometry (Fixed), 1-3ug/1x10<sup>6</sup> cells, Human  
ELISA, 0.1-0.5ug/ml, -

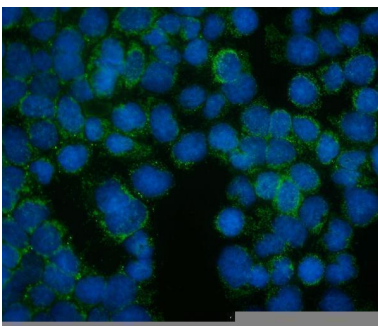
## Anti-FRMD6/Willin Antibody Picoband® (A08826-2) Images



Western blot analysis of FRMD6 using anti-FRMD6 antibody (A08826-2). Electrophoresis was performed on a 5-20% SDS-PAGE gel at 70V (Stacking gel) / 90V (Resolving gel) for 2-3 hours. The sample well of each lane was loaded with 50ug of sample under reducing conditions. Lane 1: human HeLa whole cell lysates, Lane 2: human PC-3 whole cell lysates, Lane 3: human PANC-1 whole cell lysates, Lane 4: human CACO-2 whole cell lysates, Lane 5: rat PC-12 whole cell lysates, Lane 6: mouse Neuro-2a whole cell lysates, After Electrophoresis, proteins were transferred to a Nitrocellulose membrane at 150mA for 50-90 minutes. Blocked the membrane with 5% Non-fat Milk/ TBS for 1.5 hour at RT. The membrane was incubated with rabbit anti-FRMD6 antigen affinity purified polyclonal antibody (Catalog # A08826-2) at 0.5 ug/mL overnight at 4°C, then washed with TBS-0.1%Tween 3 times with 5 minutes each and probed with a goat anti-rabbit IgG-HRP secondary antibody at a dilution of 1:5000 for 1.5 hour at RT. The signal is developed using an Enhanced Chemiluminescent detection (ECL) kit (Catalog # EK1002) with Tanon 5200 system. A specific band was detected for FRMD6 at approximately 72KD. The expected band size for FRMD6 is at 72KD.

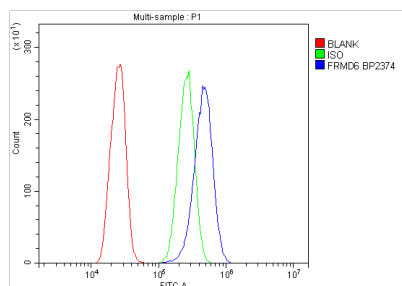


IHC analysis of FRMD6 using anti-FRMD6 antibody (A08826-2). FRMD6 was detected in paraffin-embedded section of human rectum cancer tissue. Heat mediated antigen retrieval was performed in EDTA buffer (pH8.0, epitope retrieval solution). The tissue section was blocked with 10% goat serum. The tissue section was then incubated with 1ug/ml rabbit anti-FRMD6 Antibody (A08826-2) overnight at 4°C. Biotinylated goat anti-rabbit IgG was used as secondary antibody and incubated for 30 minutes at 37°C. The tissue section was developed using Streptavidin-Biotin-Complex (SABC) (Catalog # SA1022) with DAB as the chromogen.



IF analysis of FRMD6 using anti-FRMD6 antibody (A08826-2). FRMD6 was detected in immunocytochemical section of A431 cells. Enzyme antigen retrieval was performed using IHC enzyme antigen retrieval reagent (AR0022) for 15 mins. The cells were blocked with 10% goat serum. And then incubated with 2ug/mL rabbit anti-FRMD6 Antibody (A08826-2) overnight at 4°C. DyLight®488 Conjugated Goat Anti-Rabbit IgG (BA1127) was used as secondary antibody at 1:100 dilution and incubated for 30 minutes at 37°C. The section was counterstained with DAPI. Visualize using a fluorescence microscope and filter sets appropriate for the label used.

Flow Cytometry analysis of A431 cells using anti-FRMD6 antibody (A08826-2). Overlay histogram showing A431 cells stained with A08826-2 (Blue line).The cells were blocked



with 10% normal goat serum. And then incubated with rabbit anti-FRMD6 Antibody (A08826-2, 1ug/1x10<sup>6</sup> cells) for 30 min at 20°C. DyLight®488 conjugated goat anti-rabbit IgG (BA1127, 5-10ug/1x10<sup>6</sup> cells) was used as secondary antibody for 30 minutes at 20°C. Isotype control antibody (Green line) was rabbit IgG (1ug/1x10<sup>6</sup>) used under the same conditions. Unlabelled sample (Red line) was also used as a control.

## Submit a product review to Biocompare.com

Submit a review of this product to Biocompare.com to receive a \$20 Amazon.com giftcard! Your reviews help your fellow scientists make the right decisions. Thank you for your contribution.



### Anti-FRMD6/Willin Antibody

For Research Use Only. Not for use in diagnostic procedures.