

## Anti-Maelstrom Antibody

Catalog Number: A08829

### About MAEL

The mammalian homolog of the *Drosophila* protein Maelstrom is expressed in the male germline and localizes to the sex body in spermatocytes and the chromatoid body in round spermatids. Similar to its expression in *Drosophila*, Maelstrom is a component of nuages, a germ-cell specific organelle and is thought to be essential for spermatogenesis and transposon repression during meiosis. In humans, Maelstrom has been found to be expressed only in the testis and in various cancer cell lines. Treatment of these cell lines with the demethylating agent 5'-Aza-2-Deoxycytidine significantly upregulated Maelstrom levels, indicating that its expression is regulated by DNA methylation.

### Overview

Product Name	Anti-Maelstrom Antibody
Reactive Species	Human, Mouse, Rat
Description	Boster Bio Anti-Maelstrom Antibody (Catalog # A08829). Tested in ELISA, WB, ICC, IF applications. This antibody reacts with Human, Mouse, Rat.
Application	ELISA, IF, ICC, WB
Clonality	Polyclonal
Formulation	Maelstrom Antibody is supplied in PBS containing 0.02% sodium azide.
Storage Instructions	Maelstrom antibody can be stored at 4°C for three months and -20°C, stable for up to one year. Avoid repeated freeze-thaw cycles. Antibodies should not be exposed to prolonged high temperatures.
Host	Rabbit
Uniprot ID	Q96JY0

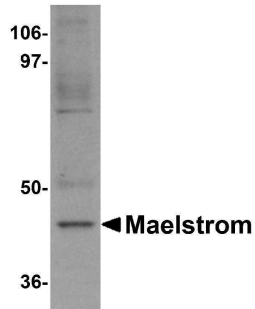
### Technical Details

Immunogen	Maelstrom antibody was raised against a 16 amino acid synthetic peptide near the carboxy terminus of human Maelstrom. The immunogen is located within amino acids 30 - 80 of Maelstrom.
Predicted Reactive Species	Bovine, Pig
Isotype	IgG
Form	Liquid
Concentration	1 mg/mL
Purification	Maelstrom Antibody is affinity chromatography purified via peptide column.
Suggested Dilutions	Maelstrom antibody can be used for detection of Maelstrom by Western blot at 1 ug/mL. Antibody

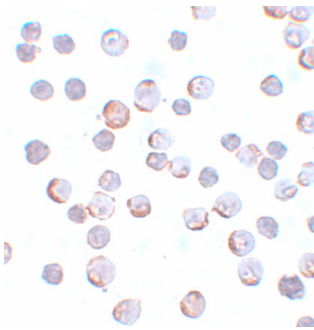
can also be used for immunocytochemistry starting at 5 ug/mL. For immunofluorescence start at 20 ug/mL.

Antibody validated: Western Blot in human samples; Immunocytochemistry in human samples and Immunofluorescence in human samples. All other applications and species not yet tested. Optimal dilutions for each application should be determined by the researcher.

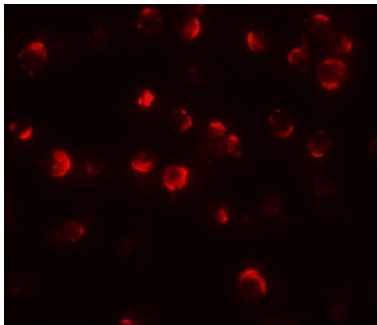
## Anti-Maelstrom Antibody (A08829) Images



Western blot analysis of Maelstrom in HeLa cell lysate with Maelstrom antibody at 1 ug/mL.



Immunocytochemistry of Maelstrom in HeLa cells with Maelstrom antibody at 5 ug/mL.



Immunofluorescence of Maelstrom in HeLa cells with Maelstrom antibody at 20 ug/mL.

### Submit a product review to [Biocompare.com](https://www.biocompare.com)

Submit a review of this product to [Biocompare.com](https://www.biocompare.com) to receive a \$20 Amazon.com giftcard! Your reviews help your fellow scientists make the right decisions. Thank you for your contribution.



### Anti-Maelstrom Antibody

For Research Use Only. Not for use in diagnostic procedures.