

## Anti-MAEL Antibody Picoband®

Catalog Number: A08829-1

### About MAEL

The mammalian homolog of the Drosophila protein Maelstrom is expressed in the male germline and localizes to the sex body in spermatocytes and the chromatoid body in round spermatids. Similar to its expression in Drosophila, Maelstrom is a component of nuages, a germ-cell specific organelle and is thought to be essential for spermatogenesis and transposon repression during meiosis. In humans, Maelstrom has been found to be expressed only in the testis and in various cancer cell lines. Treatment of these cell lines with the demethylating agent 5'-Aza-2-Deoxycytidine significantly upregulated Maelstrom levels, indicating that its expression is regulated by DNA methylation.

### Overview

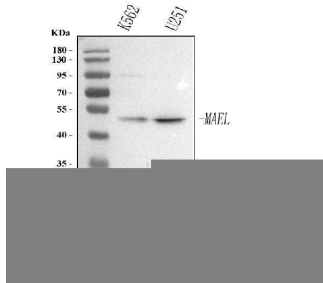
Product Name	Anti-MAEL Antibody Picoband®
Reactive Species	Human
Description	Boster Bio Anti-MAEL Antibody Picoband® catalog # A08829-1. Tested in ELISA, WB, Flow Cytometry applications. This antibody reacts with Human. The brand Picoband indicates this is a premium antibody that guarantees superior quality, high affinity, and strong signals with minimal background in Western blot applications. Only our best-performing antibodies are designated as Picoband, ensuring unmatched performance.
Application	ELISA, Flow Cytometry, WB
Clonality	Polyclonal
Formulation	Each vial contains 4 mg Trehalose, 0.9 mg NaCl, 0.2 mg Na <sub>2</sub> HPO <sub>4</sub> .
Storage Instructions	At -20°C for one year from date of receipt. After reconstitution, at 4°C for one month. It can also be aliquotted and stored frozen at -20°C for six months. Avoid repeated freezing and thawing.
Host	Rabbit
Uniprot ID	Q96JY0

### Technical Details

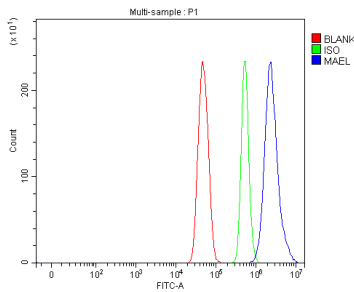
Immunogen	E.coli-derived human MAEL recombinant protein (Position: E73-Q347).
Recommended Detection Systems	Boster recommends Enhanced Chemiluminescent Kit with anti-Rabbit IgG (EK1002) for Western blot.
Cross Reactivity	No cross-reactivity with other proteins.
Isotype	Rabbit IgG
Form	Lyophilized
Concentration	Adding 0.2 ml of distilled water will yield a concentration of 500 µg/ml.

Purification	Immunogen affinity purified.
Suggested Dilutions	Western blot, 0.25-0.5 ug/ml, Human Flow Cytometry (Fixed), 1-3 ug/1x10 <sup>6</sup> cells, Human ELISA, 0.1-0.5 ug/ml, -

## Anti-MAEL Antibody Picoband® (A08829-1) Images



Western blot analysis of MAEL using anti-MAEL antibody (A08829-1). Electrophoresis was performed on a 5-20% SDS-PAGE gel at 70V (Stacking gel) / 90V (Resolving gel) for 2-3 hours. The sample well of each lane was loaded with 30 ug of sample under reducing conditions. Lane 1: human K562 whole cell lysates, Lane 2: human U251 whole cell lysates. After electrophoresis, proteins were transferred to a nitrocellulose membrane at 150 mA for 50-90 minutes. Blocked the membrane with 5% non-fat milk/TBS for 1.5 hour at RT. The membrane was incubated with rabbit anti-MAEL antigen affinity purified polyclonal antibody (Catalog # A08829-1) at 0.5 ug/mL overnight at 4°C, then washed with TBS-0.1%Tween 3 times with 5 minutes each and probed with a goat anti-rabbit IgG-HRP secondary antibody at a dilution of 1:5000 for 1.5 hour at RT. The signal is developed using an Enhanced Chemiluminescent detection (ECL) kit (Catalog # EK1002) with Tanon 5200 system. A specific band was detected for MAEL at approximately 49 kDa. The expected band size for MAEL is at 49 kDa.



Flow Cytometry analysis of U251 cells using anti-MAEL antibody (A08829-1). Overlay histogram showing U251 cells stained with A08829-1 (Blue line). To facilitate intracellular staining, cells were fixed with 4% paraformaldehyde and permeabilized with permeabilization buffer. The cells were blocked with 10% normal goat serum. And then incubated with rabbit anti-MAEL Antibody (A08829-1, 1 ug/1x10<sup>6</sup> cells) for 30 min at 20°C. DyLight®488 conjugated goat anti-rabbit IgG (BA1127, 5-10 ug/1x10<sup>6</sup> cells) was used as secondary antibody for 30 minutes at 20°C. Isotype control antibody (Green line) was rabbit IgG (1 ug/1x10<sup>6</sup>) used under the same conditions. Unlabelled sample (Red line) was also used as a control.

### Submit a product review to Biocompare.com

Submit a review of this product to Biocompare.com to receive a \$20 Amazon.com giftcard! Your reviews help your fellow scientists make the right decisions. Thank you for your contribution.



### Anti-MAEL Antibody

For Research Use Only. Not for use in diagnostic procedures.