

Anti-APC7 ANAPC7 Antibody

Catalog Number: A08839

About ANAPC7

Cell cycle regulated protein ubiquitination and degradation within subcellular domains is thought to be essential for the normal progression of mitosis. APC7 is a highly conserved component of the anaphase promoting complex/cyclosome (APC/C), a cell cycle-regulated E3 ubiquitin ligase that controls progression through mitosis and the G1 phase of the cell cycle. APC/C is responsible for degrading anaphase inhibitors, mitotic cyclins, and spindle-associated proteins ensuring that events of mitosis take place in proper sequence. The individual APC/C components mRNA and protein levels are expressed at approximately the same levels in most tissues and cell lines, suggesting that they perform their functions as part of a complex. APC7 is required for proper protein ubiquitination function of APC/C and for the interaction of APC/C with various transcription coactivators.

Overview

Product Name	Anti-APC7 ANAPC7 Antibody
Reactive Species	Human, Mouse, Rat
Description	Boster Bio Anti-APC7 ANAPC7 Antibody (Catalog # A08839). Tested in ELISA, WB, IF applications. This antibody reacts with Human, Mouse, Rat.
Application	ELISA, IF, WB
Clonality	Polyclonal
Formulation	APC7 Antibody is supplied in PBS containing 0.02% sodium azide.
Storage Instructions	APC7 antibody can be stored at 4°C for three months and -20°C, stable for up to one year. Avoid repeated freeze-thaw cycles. Antibodies should not be exposed to prolonged high temperatures.
Host	Rabbit
Uniprot ID	Q9UJX3

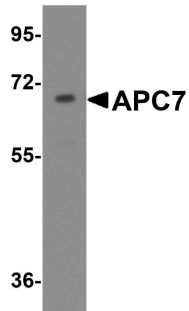
Technical Details

Immunogen	APC7 antibody was raised against an 18 amino acid synthetic peptide near the carboxy terminus of human APC7. The immunogen is located within amino acids 520 - 570 of APC7.
Predicted Reactive Species	Bovine, Pig
Isotype	IgG
Form	Liquid
Concentration	1 mg/mL
Purification	APC7 Antibody is affinity chromatography purified via peptide column.

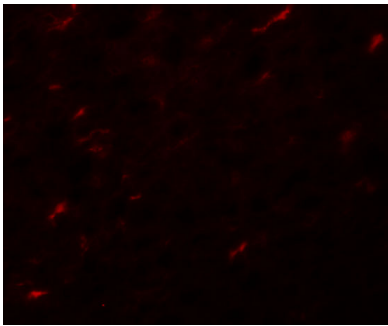
Suggested Dilutions

APC7 antibody can be used for detection of APC7 by Western blot at 1 - 2 ug/mL. Antibody can also be used for immunofluorescence starting at 20 ug/mL. For immunofluorescence start at 20 ug/mL. Antibody validated: Western Blot in human samples and Immunofluorescence in rat samples. All other applications and species not yet tested. Optimal dilutions for each application should be determined by the researcher.

Anti-APC7 ANAPC7 Antibody (A08839) Images



Western blot analysis of APC7 in HeLa cell lysate with APC7 antibody at 1 ug/mL.



Immunofluorescence of APC7 in rat kidney tissue with APC7 antibody at 20 ug/mL.

Submit a product review to [Biocompare.com](https://www.biocompare.com)

Submit a review of this product to [Biocompare.com](https://www.biocompare.com) to receive a \$20 Amazon.com giftcard! Your reviews help your fellow scientists make the right decisions. Thank you for your contribution.



Anti-APC7 ANAPC7 Antibody

For Research Use Only. Not for use in diagnostic procedures.