

## Anti-JMJD5 KDM8 Antibody

Catalog Number: A08840

### About KDM8

The jumonji domain-containing protein (JMJD) family is defined by the presence of the JmjC domain that is observed in several diverse species. While several JMJD proteins have been identified as being involved in chromatin regulation, histone demethylation and development, the function of JMJD5 has not been identified. JMJD5 is expressed in multiple tissues.

### Overview

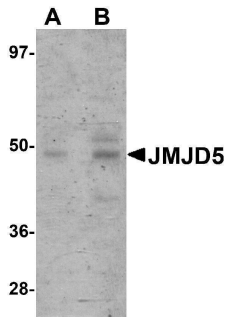
Product Name	Anti-JMJD5 KDM8 Antibody
Reactive Species	Human, Mouse, Rat
Description	Boster Bio Anti-JMJD5 KDM8 Antibody (Catalog # A08840). Tested in ELISA, WB, IHC-P, IF applications. This antibody reacts with Human, Mouse, Rat.
Application	ELISA, IF, IHC-P, WB
Clonality	Polyclonal
Formulation	JMJD5 Antibody is supplied in PBS containing 0.02% sodium azide.
Storage Instructions	JMJD5 antibody can be stored at 4°C for three months and -20°C, stable for up to one year. Avoid repeated freeze-thaw cycles. Antibodies should not be exposed to prolonged high temperatures.
Host	Rabbit
Uniprot ID	Q8N371

### Technical Details

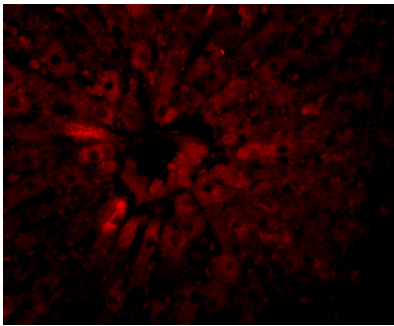
Immunogen	JMJD5 antibody was raised against an 18 amino acid synthetic peptide from near the carboxy terminus of human JMJD5. The immunogen is located within amino acids 350 - 400 of JMJD5.
Predicted Reactive Species	Bovine
Isotype	IgG
Form	Liquid
Concentration	1 mg/mL
Purification	JMJD5 Antibody is affinity chromatography purified via peptide column.
Suggested Dilutions	JMJD5 antibody can be used for detection of JMJD5 by Western blot at 1 - 2 ug/mL. Antibody can also be used for immunohistochemistry starting at 2.5 ug/mL. For immunofluorescence start at 20 ug/mL. Antibody validated: Western Blot in human samples; Immunohistochemistry in rat samples and

Immunofluorescence in rat samples. All other applications and species not yet tested. Optimal dilutions for each application should be determined by the researcher.

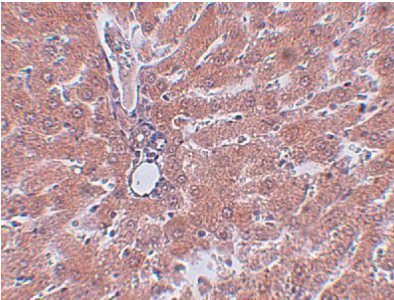
## Anti-JMJD5 KDM8 Antibody (A08840) Images



Western blot analysis of JMJD5 in human liver tissue lysate with JMJD5 antibody at (A) 1 and (B) 2 ug/mL.



Immunofluorescence of JMJD5 in Rat Liver cells with JMJD5 antibody at 20 ug/mL.



Immunohistochemistry of JMJD5 in rat liver tissue with JMJD5 antibody at 2.5 ug/mL.

### Submit a product review to [Biocompare.com](https://www.biocompare.com)

Submit a review of this product to [Biocompare.com](https://www.biocompare.com) to receive a \$20 Amazon.com giftcard! Your reviews help your fellow scientists make the right decisions. Thank you for your contribution.



Anti-JMJD5 KDM8 Antibody

For Research Use Only. Not for use in diagnostic procedures.