

## Anti-Mdm2-binding protein MTBP Antibody

Catalog Number: A08842

### About MTBP

The p53 tumor-suppressor gene integrates numerous signals that control cell life and death. Several novel molecules involved in p53 network, including Chk2, p53R2, p53AIP1, Noxa, PIDD, PID/MTA2 and MTBP, were recently discovered. The transcriptional activity of p53 is modulated by posttranslational regulations of the p53 protein including stabilization and acetylation. P53 transcriptionally activates MDM2 gene then the translated MDM2 protein binds to p53 and promotes the degradation of p53 leading to lowering the concentration of p53 protein. MDM2 inhibits both p53 mediated G1 arrest and apoptosis. A recently discovered protein termed MTBP was found to bind to MDM2 and to inhibit the modulation effect of MDM2 on p53. MTBP is expressed in a variety of normal tissues.

### Overview

Product Name	Anti-Mdm2-binding protein MTBP Antibody
Reactive Species	Human
Description	Boster Bio Anti-Mdm2-binding protein MTBP Antibody (Catalog # A08842). Tested in ELISA, WB, ICC, IF applications. This antibody reacts with Human.
Application	ELISA, IF, ICC, WB
Clonality	Polyclonal
Formulation	MTBP Antibody is supplied in PBS containing 0.02% sodium azide.
Storage Instructions	MTBP antibody can be stored at 4°C for three months and -20°C, stable for up to one year. Avoid repeated freeze-thaw cycles. Antibodies should not be exposed to prolonged high temperatures.
Host	Rabbit
Uniprot ID	Q96DY7

### Technical Details

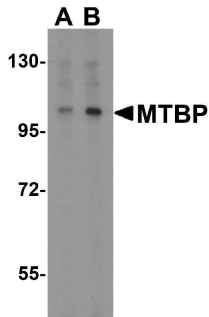
Immunogen	MTBP antibody was raised against a 18 amino acid peptide near the center of human MTBP. The immunogen is located within amino acids 110 - 160 of MTBP.
Predicted Reactive Species	Mouse
Isotype	IgG
Form	Liquid
Concentration	1 mg/ml
Purification	MTBP Antibody is affinity chromatography purified via peptide column.

**Suggested Dilutions**

MTBP antibody can be used for detection of MTBP by Western blot at 1 to 2  $\mu\text{g}/\text{mL}$ . A 104 kDa band can be detected. Antibody can also be used for immunocytochemistry starting at 5  $\mu\text{g}/\text{mL}$ . For immunofluorescence start at 20  $\mu\text{g}/\text{mL}$ .

Antibody validated: Western Blot in human samples; Immunocytochemistry in human samples and Immunofluorescence in human samples. All other applications and species not yet tested. Optimal dilutions for each application should be determined by the researcher.

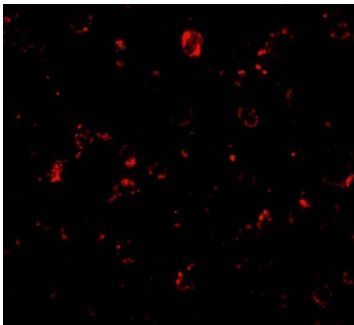
## Anti-Mdm2-binding protein MTBP Antibody (A08842) Images



Western blot analysis of MTBP expression in K562 cell lysate with MTBP antibody at (A) 1 and (B) 2 ug/ml.



Immunocytochemistry of MTBP in K562 cells with MTBP antibody at 5 ug/mL.



Immunofluorescence of MTBP in K562 cells with MTBP antibody at 20 ug/mL.

## 1 Publications Citing This Product

1. PubMed ID: -, Jiang X,Yuan J,Dou Y,Zeng D,Xiao S.Lipopolysaccharide Affects the Proliferation and Glucose Metabolism of Cervical Cancer Cells Through the FRA1/MDM2/p53 Pathway.Int J Med Sci 2021;18(4): 1030-1038.doi:10. 7150/ijms.47360.

Visit [bosterbio.com/anti-mdm2-binding-protein-mtbp-antibody-a08842-boster.html](https://bosterbio.com/anti-mdm2-binding-protein-mtbp-antibody-a08842-boster.html) to see all 1 publications.

## Submit a product review to Biocompare.com

Submit a review of this product to Biocompare.com to receive a \$20 Amazon.com giftcard! Your reviews help your fellow scientists make the right decisions. Thank you for your contribution.



Anti-Mdm2-binding protein MTBP Antibody

For Research Use Only. Not for use in diagnostic procedures.