

Anti-Cdc42 effector protein 1 CDC42EP1 Antibody

Catalog Number: A08856

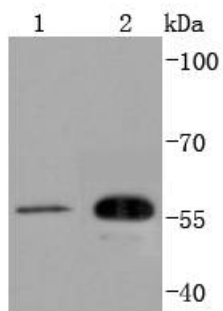
Overview

Product Name	Anti-Cdc42 effector protein 1 CDC42EP1 Antibody
Reactive Species	Human
Description	Boster Bio Anti-Cdc42 effector protein 1 CDC42EP1 Antibody catalog # A08856. Tested in WB applications. This antibody reacts with Human.
Application	WB
Clonality	Polyclonal
Formulation	Rabbit IgG, 1mg/ml in PBS with 0.02% sodium azide, 50% glycerol, pH7.2
Storage Instructions	Store at -20°C for one year. For short term storage and frequent use, store at 4°C for up to one month. Avoid repeated freeze-thaw cycles.
Host	Rabbit
Uniprot ID	Q00587

Technical Details

Immunogen	recombinant protein
Isotype	IgG
Form	Liquid
Concentration	1 mg/ml
Purification	ProA affinity purified
Suggested Dilutions	WB: 1:1,000-1:2,000

Anti-Cdc42 effector protein 1 CDC42EP1 Antibody (A08856) Images



Western blot analysis of CDC42EP1 on different lysates using anti-CDC42EP1 antibody at 1/1,000 dilution. Positive control:
Lane 1: HUVEC Lane 2: HeLa

Submit a product review to Biocompare.com

Submit a review of this product to Biocompare.com to receive a \$20 Amazon.com giftcard! Your reviews help your fellow scientists make the right decisions. Thank you for your contribution.



Anti-Cdc42 effector protein 1 CDC42EP1 Antibody

For Research Use Only. Not for use in diagnostic procedures.