

## Anti-Prickle-like protein 2 PRICKLE2 Antibody

Catalog Number: A08874

### About PRICKLE2

PRICKLE2, also known as Pk2 or EPM5, is a member of a highly conserved protein family that function in the noncanonical WNT signaling pathway which regulates intracellular calcium release and planar cell polarity. Both PRICKLE2 and the related protein PRICKLE1 are expressed in postmitotic neurons and promote neurite outgrowth, and both proteins promote neurite outgrowth via the Dishevelled dependent pathway in C1300 cells. PRICKLE2 localizes to the postsynaptic density and interacts with PSD-95 and NMDA receptors. Defects in the gene encoding PRICKLE2 are associated with autosomal recessive progressive myoclonic epilepsy.

### Overview

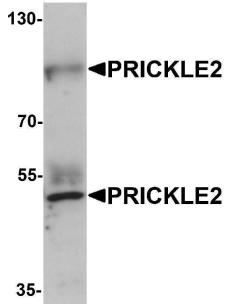
Product Name	Anti-Prickle-like protein 2 PRICKLE2 Antibody
Reactive Species	Human, Mouse, Rat
Description	Boster Bio Anti-Prickle-like protein 2 PRICKLE2 Antibody (Catalog # A08874). Tested in ELISA, WB, IF applications. This antibody reacts with Human, Mouse, Rat.
Application	ELISA, IF, WB
Clonality	Polyclonal
Formulation	PRICKLE2 Antibody is supplied in PBS containing 0.02% sodium azide.
Storage Instructions	PRICKLE2 antibody can be stored at 4°C for three months and -20°C, stable for up to one year. Avoid repeated freeze-thaw cycles. Antibodies should not be exposed to prolonged high temperatures.
Host	Rabbit
Uniprot ID	Q7Z3G6

### Technical Details

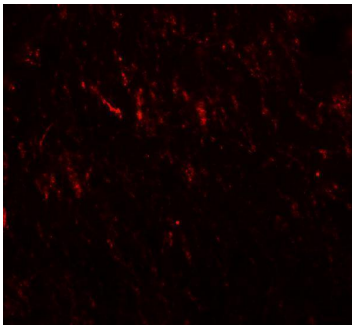
Immunogen	PRICKLE2 antibody was raised against a 15 amino acid synthetic peptide near the center of human PRICKLE2. The immunogen is located within amino acids 420 - 470 of PRICKLE2.
Predicted Reactive Species	Pig
Cross Reactivity	Two isoforms of PRICKLE2 are known to exist. PRICKLE2 antibody is predicted to not cross-react with other PRICKLE protein family members.
Isotype	IgG
Form	Liquid
Concentration	1 mg/mL

Purification	PRICKLE2 Antibody is affinity chromatography purified via peptide column.
Suggested Dilutions	<p>PRICKLE2 antibody can be used for detection of PRICKLE2 by Western blot at 1 ug/mL. Antibody can also be used for immunofluorescence starting at 20 ug/mL. For immunofluorescence start at 20 ug/mL.</p> <p>Antibody validated: Western Blot in mouse samples and Immunofluorescence in rat samples. All other applications and species not yet tested. Optimal dilutions for each application should be determined by the researcher.</p>

## Anti-Prickle-like protein 2 PRICKLE2 Antibody (A08874) Images



Western blot analysis of PRICKLE2 in A-20 lysate with PRICKLE2 antibody at 1 ug/mL.



Immunofluorescence of PRICKLE2 in rat brain cells with PRICKLE2 antibody at 20 ug/mL.

### Submit a product review to [Biocompare.com](https://www.biocompare.com)

Submit a review of this product to [Biocompare.com](https://www.biocompare.com) to receive a \$20 Amazon.com giftcard! Your reviews help your fellow scientists make the right decisions. Thank you for your contribution.



Anti-Prickle-like protein 2 PRICKLE2 Antibody

For Research Use Only. Not for use in diagnostic procedures.