

Anti-Syntaphilin SNPH Antibody

Catalog Number: A08882

About SNPH

Syntaphilin was initially identified in a yeast two-hybrid screen with the carboxy terminal region of Syntaxin-1 as bait. Syntaxin-1 is a key component of the synaptic vesicle docking machinery that forms the SNARE complex with synaptobrevin and SNAP-25. Syntaphilin competes with SNAP-25 for binding to syntaxin-1 and inhibits the formation of the SNARE complex, thereby potentially regulating synaptic vesicle exocytosis. Syntaphilin also binds dynamin-1 and inhibits dynamin-dependent endocytosis. Mice lacking syntaphilin show an increased level of mitochondrial motility and a reduced density of axonal mitochondria. This correlates with an enhanced short-term facilitation and significant impairments in motor ability, suggesting syntaphilin plays a major role in presynaptic function. Multiple isoforms are known to exist.

Overview

Product Name	Anti-Syntaphilin SNPH Antibody
Reactive Species	Human, Mouse, Rat
Description	Boster Bio Anti-Syntaphilin SNPH Antibody (Catalog # A08882). Tested in ELISA, WB, IHC-P, IF applications. This antibody reacts with Human, Mouse, Rat.
Application	ELISA, IF, IHC-P, WB
Clonality	Polyclonal
Formulation	Syntaphilin Antibody is supplied in PBS containing 0.02% sodium azide.
Storage Instructions	Syntaphilin antibody can be stored at 4°C for three months and -20°C, stable for up to one year. Avoid repeated freeze-thaw cycles. Antibodies should not be exposed to prolonged high temperatures.
Host	Rabbit
Uniprot ID	O15079

Technical Details

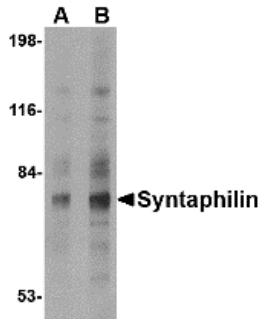
Immunogen	Syntaphilin antibody was raised against a 18 amino acid synthetic peptide from near the amino terminus of human Syntaphilin. The immunogen is located within amino acids 80 - 130 of Syntaphilin.
Predicted Reactive Species	Pig
Isotype	IgG
Form	Liquid
Concentration	1 mg/mL
Purification	Syntaphilin Antibody is affinity chromatography purified via peptide column.

Suggested Dilutions

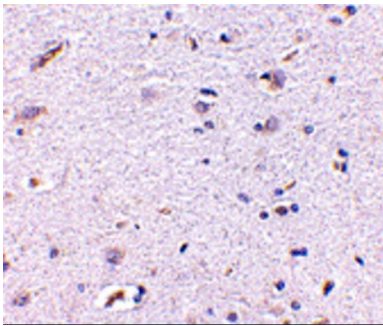
Syntaphilin antibody can be used for detection of Syntaphilin by Western blot at 2 - 4 ug/mL. Despite its predicted molecular weight, Syntaphilin usually migrates at higher molecular weight in SDS-PAGE. Antibody can also be used for immunohistochemistry starting at 5 ug/mL. For immunofluorescence start at 20 ug/mL.

Antibody validated: Western Blot in human samples; Immunohistochemistry in human samples and Immunofluorescence in human samples. All other applications and species not yet tested. Optimal dilutions for each application should be determined by the researcher.

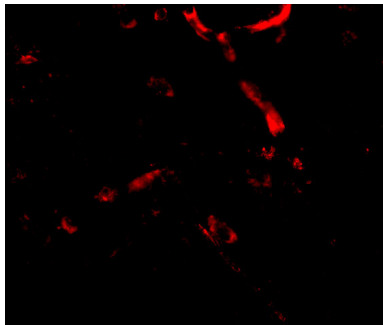
Anti-Syntaphilin SNPH Antibody (A08882) Images



Western blot analysis of Syntaphilin in human brain tissue lysate with Syntaphilin antibody at (A) 2 and (B) 4 ug/mL.



Immunohistochemistry of Syntaphilin in human brain with Syntaphilin antibody at 5 ug/mL.



Immunofluorescence of Syntaphilin in Human Brain cells with Syntaphilin antibody at 20 ug/mL.

Submit a product review to [Biocompare.com](https://www.biocompare.com)

Submit a review of this product to [Biocompare.com](https://www.biocompare.com) to receive a \$20 Amazon.com giftcard! Your reviews help your fellow scientists make the right decisions. Thank you for your contribution.



Anti-Syntaphilin SNPH Antibody

For Research Use Only. Not for use in diagnostic procedures.