

## Anti-CUEDC2 Antibody

Catalog Number: A08885

### About CUEDC2

The CUE (coupling of ubiquitin conjugation to endoplasmic reticulum degradation) domain is an evolutionarily conserved, ~40 amino acid monoubiquitin-binding domain that mediates intramolecular monoubiquitylation. CUE domains are present in eukaryotic proteins that are involved in ubiquitination and protein trafficking pathways and may be required for ubiquitination of the proteins in which they are found. CUEDC2 (CUE domain-containing protein 2) was found through a yeast two-hybrid screening as a protein that interacts with the progesterone receptor (PR) and promotes progesterone-induced PR degradation by the ubiquitin-proteasome pathway. CUEDC2 also decreases the sumoylation of PR. CUEDC2 has also been found to interact with IKK-alpha and IKK-beta and decrease the activation of NF-kappaB by decreasing the activation of IKK.

### Overview

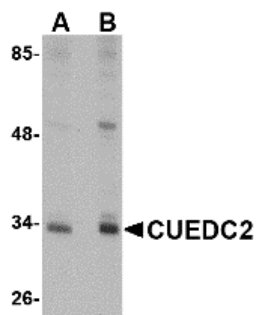
Product Name	Anti-CUEDC2 Antibody
Reactive Species	Human, Mouse, Rat
Description	Boster Bio Anti-CUEDC2 Antibody (Catalog # A08885). Tested in ELISA, WB, ICC applications. This antibody reacts with Human, Mouse, Rat.
Application	ELISA, ICC, WB
Clonality	Polyclonal
Formulation	CUEDC2 Antibody is supplied in PBS containing 0.02% sodium azide.
Storage Instructions	CUEDC2 antibody can be stored at 4°C for three months and -20°C, stable for up to one year. Avoid repeated freeze-thaw cycles. Antibodies should not be exposed to prolonged high temperatures.
Host	Rabbit
Uniprot ID	Q9H467

### Technical Details

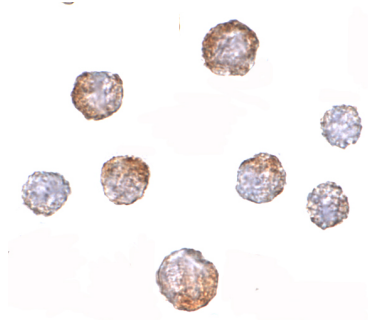
Immunogen	CUEDC2 antibody was raised against a 19 amino acid synthetic peptide from near the carboxy terminus of human CUEDC2. The immunogen is located within the last 50 amino acids of CUEDC2.
Predicted Reactive Species	Bovine
Cross Reactivity	CUEDC2 antibody will not cross-react with CUEDC1.
Isotype	IgG
Form	Liquid
Concentration	1 mg/mL

Purification	CUEDC2 Antibody is affinity chromatography purified via peptide column.
Suggested Dilutions	CUEDC2 antibody can be used for detection of CUEDC2 by Western blot at 1 - 2 ug/mL. Antibody can also be used for immunocytochemistry starting at 5 ug/mL. Antibody validated: Western Blot in human samples and Immunocytochemistry in human samples. All other applications and species not yet tested. Optimal dilutions for each application should be determined by the researcher.

## Anti-CUEDC2 Antibody (A08885) Images



Western blot analysis of CUEDC2 in HeLa cell lysate with CUEDC2 antibody at (A) 1 and (B) 2 ug/mL.



Immunocytochemistry of CUEDC2 in HeLa cells with CUEDC2 antibody at 5 ug/mL.

### Submit a product review to [Biocompare.com](https://www.biocompare.com)

Submit a review of this product to [Biocompare.com](https://www.biocompare.com) to receive a \$20 Amazon.com giftcard! Your reviews help your fellow scientists make the right decisions. Thank you for your contribution.



Anti-CUEDC2 Antibody

For Research Use Only. Not for use in diagnostic procedures.