

Anti-CLIP170 Antibody

Catalog Number: A08907

About CLIP1

CLIP170 was initially identified as a new type of intermediate filament associated protein that is highly expressed in Reed-Sternberg cells, the tumoral cells diagnostic for Hodgkin's disease. Later experiments showed that it is located at microtubule plus ends and is required for the binding of endocytic carrier vesicles. CLIP170 has also been suggested to act with LIS1, a protein implicated in brain development, to regulate dynein/dynactin binding microtubules. Other studies suggest that CLIP170 can influence the formation of lamellipodia and cell invasion by invasive breast cancer cells by regulating the release of kinesin and IQGAP1 from a complex of those proteins, CLIP170 and Rac1. At least two isoforms of CLIP170 are known to exist.

Overview

Product Name	Anti-CLIP170 Antibody
Reactive Species	Human, Mouse, Rat
Description	Boster Bio Anti-CLIP170 Antibody (Catalog # A08907). Tested in ELISA, WB, IF applications. This antibody reacts with Human, Mouse, Rat.
Application	ELISA, IF, WB
Clonality	Polyclonal
Formulation	CLIP170 Antibody is supplied in PBS containing 0.02% sodium azide.
Storage Instructions	CLIP170 antibody can be stored at 4°C for three months and -20°C, stable for up to one year. Avoid repeated freeze-thaw cycles. Antibodies should not be exposed to prolonged high temperatures.
Host	Rabbit
Uniprot ID	P30622

Technical Details

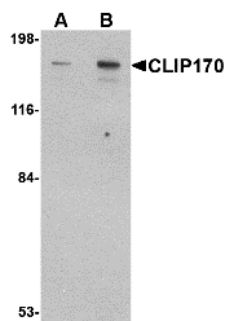
Immunogen	CLIP170 antibody was raised against a 17 amino acid synthetic peptide from near the carboxy terminus of human CLIP170. The immunogen is located within amino acids 1340 - 1390 of CLIP170.
Predicted Reactive Species	Bovine
Isotype	IgG
Form	Liquid
Concentration	1 mg/mL
Purification	CLIP170 Antibody is affinity chromatography purified via peptide column.

Suggested Dilutions

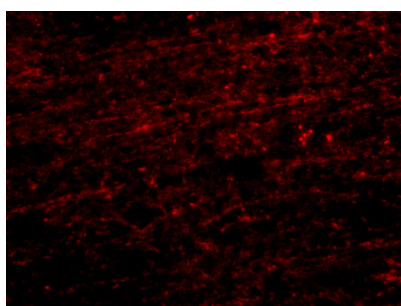
CLIP170 antibody can be used for detection of CLIP170 by Western blot at 0.5 - 1 ug/mL. Antibody can also be used for immunofluorescence starting at 20 ug/mL. For immunofluorescence start at 20 ug/mL.

Antibody validated: Western Blot in rat samples and Immunofluorescence in human samples. All other applications and species not yet tested. Optimal dilutions for each application should be determined by the researcher.

Anti-CLIP170 Antibody (A08907) Images



Western blot analysis of CLIP170 in rat brain tissue lysate with CLIP170 antibody at (A) 0.5 and (B) 1 ug/mL.



Immunofluorescence of CLIP170 in human brain tissue with CLIP170 antibody at 20 ug/mL.

Submit a product review to Biocompare.com

Submit a review of this product to Biocompare.com to receive a \$20 Amazon.com giftcard! Your reviews help your fellow scientists make the right decisions. Thank you for your contribution.



Anti-CLIP170 Antibody

For Research Use Only. Not for use in diagnostic procedures.