

## Anti-EML1 Antibody Picoband®

Catalog Number: A08919-1

### About EML1

Human echinoderm microtubule-associated protein-like is a strong candidate for the Usher syndrome type 1A gene. Usher syndromes (USHs) are a group of genetic disorders consisting of congenital deafness, retinitis pigmentosa, and vestibular dysfunction of variable onset and severity depending on the genetic type. The disease process in USHs involves the entire brain and is not limited to the posterior fossa or auditory and visual systems. The USHs are categorized as type I (USH1A, USH1B, USH1C, USH1D, USH1E and USH1F), type II (USH2A and USH2B) and type III (USH3). The type I is the most severe form. Gene loci responsible for these three types are all mapped. Two transcript variants encoding different isoforms have been found for this gene.

### Overview

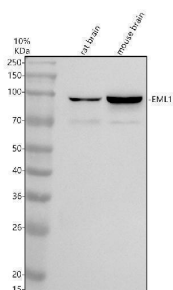
|                      |   |
|----------------------|---|
| Product Name         | Anti-EML1 Antibody Picoband®  |
| Reactive Species     | Human, Mouse, Rat   |
| Description          | Boster Bio Anti-EML1 Antibody Picoband® catalog # A08919-1. Tested in WB, IHC, ELISA applications. This antibody reacts with Human, Mouse, Rat. The brand Picoband indicates this is a premium antibody that guarantees superior quality, high affinity, and strong signals with minimal background in Western blot applications. Only our best-performing antibodies are designated as Picoband, ensuring unmatched performance. |
| Application          | ELISA, IHC, WB  |
| Clonality            | Polyclonal  |
| Formulation          | Each vial contains 4 mg Trehalose, 0.9 mg NaCl, 0.2 mg Na <sub>2</sub> HPO <sub>4</sub> .   |
| Storage Instructions | At -20°C for one year from date of receipt. After reconstitution, at 4°C for one month. It can also be aliquotted and stored frozen at -20°C for six months. Avoid repeated freezing and thawing.   |
| Host                 | Rabbit  |
| Uniprot ID           | O00423  |

### Technical Details

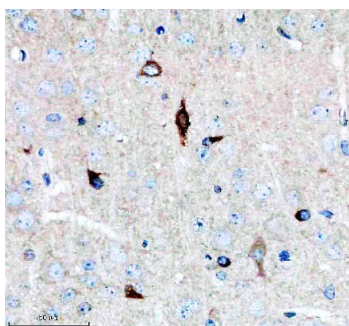
|                     |   |
|---------------------|---|
| Immunogen           | E.coli-derived human EML1 recombinant protein (Position: M1-E545).  |
| Form                | Lyophilized   |
| Concentration       | Adding 0.2 ml of distilled water will yield a concentration of 500 ug/ml.   |
| Purification        | Immunogen affinity purified.  |
| Suggested Dilutions | Western blot, 0.25-0.5 ug/ml, Mouse, Rat<br>Immunohistochemistry(Paraffin-embedded Section), 2-5 ug/ml, Human, Mouse, Rat |

|  |                      |
|--|----------------------|
|  | ELISA, 0.1-0.5 ug/ml |
|--|----------------------|

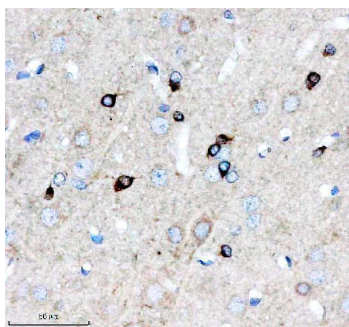
## Anti-EML1 Antibody Picoband® (A08919-1) Images



Western blot analysis of EML1 using anti-EML1 antibody (A08919-1). Electrophoresis was performed on a 10% SDS-PAGE gel at 80V (Stacking gel) / 120V (Resolving gel) for 2 hours. The sample well of each lane was loaded with 30 ug of sample under reducing conditions. Lane 1: rat brain tissue lysates, Lane 2: mouse brain tissue lysates. After electrophoresis, proteins were transferred to a nitrocellulose membrane at 150 mA for 50-90 minutes. Blocked the membrane with 5% non-fat milk/TBS for 1.5 hour at RT. The membrane was incubated with rabbit anti-EML1 antigen affinity purified polyclonal antibody (A08919-1) at 0.5 ug/mL overnight at 4°C, then washed with TBS-0.1% Tween 3 times with 5 minutes each and probed with a goat anti-rabbit IgG-HRP secondary antibody at a dilution of 1:5000 for 1.5 hour at RT. The signal is developed using an ECL Plus Western Blotting Substrate (Catalog # AR1196-200) with Tanon 5200 system. A specific band was detected for EML1 at approximately 90 kDa. The expected band size for EML1 is at 90 kDa.

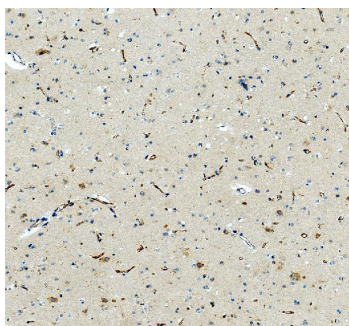


IHC analysis of EML1 using anti-EML1 antibody (A08919-1). EML1 was detected in a paraffin-embedded section of mouse brain tissue. Heat mediated antigen retrieval was performed in EDTA buffer (pH 8.0, epitope retrieval solution). The tissue section was blocked with 10% goat serum. The tissue section was then incubated with 2 ug/ml rabbit anti-EML1 Antibody (A08919-1) overnight at 4°C. Peroxidase Conjugated Goat Anti-rabbit IgG was used as secondary antibody and incubated for 30 minutes at 37°C. The tissue section was developed using HRP Conjugated Rabbit IgG Super Vision Assay Kit (Catalog # SV0002) with DAB as the chromogen.



IHC analysis of EML1 using anti-EML1 antibody (A08919-1). EML1 was detected in a paraffin-embedded section of rat brain tissue. Heat mediated antigen retrieval was performed in EDTA buffer (pH 8.0, epitope retrieval solution). The tissue section was blocked with 10% goat serum. The tissue section was then incubated with 2 ug/ml rabbit anti-EML1 Antibody (A08919-1) overnight at 4°C. Peroxidase Conjugated Goat Anti-rabbit IgG was used as secondary antibody and incubated for 30 minutes at 37°C. The tissue section was developed using HRP Conjugated Rabbit IgG Super Vision Assay Kit (Catalog # SV0002) with DAB as the chromogen.

IHC analysis of EML1 using anti-EML1 antibody (A08919-1). EML1 was detected in a paraffin-embedded section of human brain tissue. Heat mediated antigen retrieval was performed in EDTA buffer (pH 8.0, epitope retrieval solution). The tissue section was blocked with 10% goat serum. The tissue section was then incubated with 2 ug/ml



rabbit anti-EML1 Antibody (A08919-1) overnight at 4°C. Peroxidase Conjugated Goat Anti-rabbit IgG was used as secondary antibody and incubated for 30 minutes at 37°C. The tissue section was developed using HRP Conjugated Rabbit IgG Super Vision Assay Kit (Catalog # SV0002) with DAB as the chromogen.

## Submit a product review to [Biocompare.com](https://www.biocompare.com)

Submit a review of this product to [Biocompare.com](https://www.biocompare.com) to receive a \$20 Amazon.com giftcard! Your reviews help your fellow scientists make the right decisions. Thank you for your contribution.



Anti-EML1 Antibody

For Research Use Only. Not for use in diagnostic procedures.