

## Anti-ZIP13 SLC39A13 Antibody

Catalog Number: A08928

### About SLC39A13

The zinc transporter ZIP13, also known as SLC39A13, is a member of a family of divalent ion transporters. Zinc is an essential ion for cells and plays significant roles in the growth, development, and differentiation. The zinc transporter family is divided into four subfamilies (I, II, LIV-1 and gufA). ZIP13 is a multipass membrane protein that belongs to the ZIP transporter subfamily LIV-1. Mutations in ZIP13 have recently been shown to cause a spondylocheiro dysplastic form of Ehlers-Danlos syndrome (SCD-EDS), a generalized skeletal dysplasia involving mainly the spine with clinical abnormalities of the hands in addition to EDS-like features. Other experiments have shown that ZIP13 is required for proper connective tissue development and is involved in BMP/TGF- signaling pathways.

### Overview

Product Name	Anti-ZIP13 SLC39A13 Antibody
Reactive Species	Human
Description	Boster Bio Anti-ZIP13 SLC39A13 Antibody (Catalog # A08928). Tested in ELISA, IHC-P, IF applications. This antibody reacts with Human.
Application	ELISA, IF, IHC-P
Clonality	Polyclonal
Formulation	ZIP13 Antibody is supplied in PBS containing 0.02% sodium azide.
Storage Instructions	ZIP13 antibody can be stored at 4°C for three months and -20°C, stable for up to one year. Avoid repeated freeze-thaw cycles. Antibodies should not be exposed to prolonged high temperatures.
Host	Rabbit
Uniprot ID	Q96H72

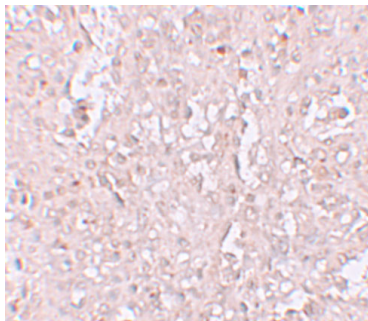
### Technical Details

Immunogen	ZIP13 antibody was raised against a 14 amino acid synthetic peptide near the amino terminus of human ZIP13. The immunogen is located within amino acids 150 - 200 of ZIP13.
Predicted Reactive Species	Bovine
Cross Reactivity	At least two isoforms of ZIP13 are known to exist; this antibody will detect both isoforms. ZIP13 antibody is predicted to not cross-react with other ZIP family members.
Isotype	IgG
Form	Liquid
Concentration	1 mg/mL

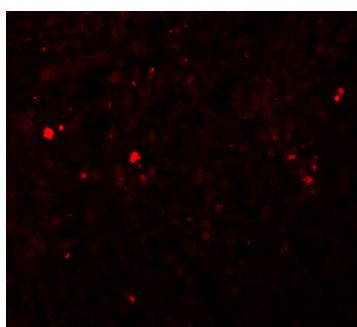
Purification	ZIP13 Antibody is affinity chromatography purified via peptide column.
Suggested Dilutions	ZIP13 Antibody can be used for immunohistochemistry starting at 2.5 ug/mL. For immunofluorescence start at 20 ug/mL. Antibody validated: Immunohistochemistry in human samples and Immunofluorescence in human samples. All other applications and species not yet tested. Optimal dilutions for each application should be determined by the researcher.

## Anti-ZIP13 SLC39A13 Antibody (A08928) Images

---



Immunohistochemistry of ZIP13 in human spleen tissue with ZIP13 antibody at 2.5 ug/mL.



Immunofluorescence of ZIP13 in human spleen tissue with ZIP13 antibody at 20 ug/mL.

### Submit a product review to [Biocompare.com](https://www.biocompare.com)

---

Submit a review of this product to [Biocompare.com](https://www.biocompare.com) to receive a \$20 Amazon.com giftcard! Your reviews help your fellow scientists make the right decisions. Thank you for your contribution.



Anti-ZIP13 SLC39A13 Antibody

For Research Use Only. Not for use in diagnostic procedures.