

Anti-Gremlin-2 GREM2 Antibody

Catalog Number: A08939

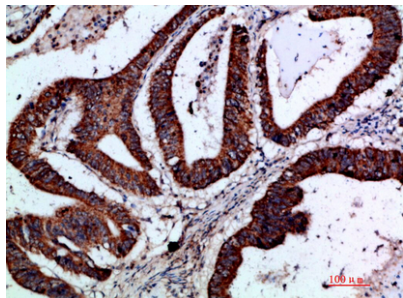
Overview

Product Name	Anti-Gremlin-2 GREM2 Antibody
Reactive Species	Human, Mouse
Description	Boster Bio Anti-Gremlin-2 GREM2 Antibody catalog # A08939. Tested in WB, IHC, IF, ELISA applications. This antibody reacts with Human, Mouse.
Application	ELISA, IF, IHC, WB
Clonality	Polyclonal
Formulation	PBS, pH 7.4, containing 0.02% sodium azide as Preservative and 50% Glycerol.
Storage Instructions	Store at -20°C for one year. For short term storage and frequent use, store at 4°C for up to one month. Avoid repeated freeze-thaw cycles.
Host	Rabbit
Uniprot ID	Q9H772

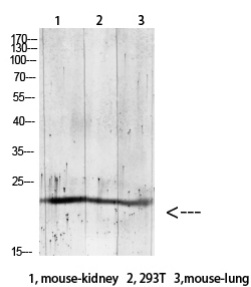
Technical Details

Immunogen	The antiserum was produced against synthesized peptide derived from the Internal region of human GREM2. AA range:71-120
Cross Reactivity	No cross reactivity with other proteins.
Isotype	IgG
Form	Liquid
Concentration	1 mg/ml
Purification	Immunogen affinity purified
Suggested Dilutions	WB 1:500-2000 IHC 1:500-200 ELISA 1:10000-20000 IF 1:50-200

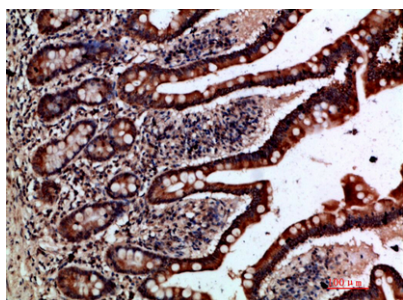
Anti-Gremlin-2 GREM2 Antibody (A08939) Images



Immunohistochemical analysis of paraffin-embedded human colon-cancer, antibody was diluted at 1:200



Western blot analysis of RAT-brain lysate, antibody was diluted at 1000. Secondary antibody was diluted at 1:20000



Immunohistochemical analysis of paraffin-embedded human small-intestine, antibody was diluted at 1:200

Submit a product review to Biocompare.com

Submit a review of this product to Biocompare.com to receive a \$20 Amazon.com giftcard! Your reviews help your fellow scientists make the right decisions. Thank you for your contribution.



Anti-Gremlin-2 GREM2 Antibody

For Research Use Only. Not for use in diagnostic procedures.