

## Anti-DCAF6 Antibody Picoband®

Catalog Number: A08950-1

### About DCAF6

The protein encoded by this gene is a ligand-dependent coactivator of nuclear receptors, including nuclear receptor subfamily 3 group C member 1 (NR3C1), glucocorticoid receptor (GR), and androgen receptor (AR). The encoded protein and DNA damage binding protein 2 (DDB2) may act as tumor promoters and tumor suppressors, respectively, by regulating the level of androgen receptor in prostate tissues. In addition, this protein can act with glucocorticoid receptor to promote human papillomavirus gene expression.

### Overview

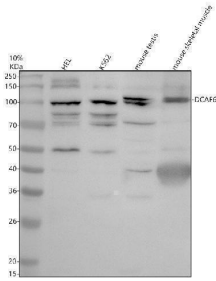
Product Name	Anti-DCAF6 Antibody Picoband®
Reactive Species	Human, Mouse
Description	Boster Bio Anti-DCAF6 Antibody Picoband® catalog # A08950-1. Tested in WB, ICC, IF, Flow Cytometry, ELISA applications. This antibody reacts with Human, Mouse. The brand Picoband indicates this is a premium antibody that guarantees superior quality, high affinity, and strong signals with minimal background in Western blot applications. Only our best-performing antibodies are designated as Picoband, ensuring unmatched performance.
Application	ELISA, Flow Cytometry, IF, ICC, WB
Clonality	Polyclonal
Formulation	Each vial contains 4 mg Trehalose, 0.9 mg NaCl, 0.2 mg Na <sub>2</sub> HPO <sub>4</sub> .
Storage Instructions	At -20°C for one year from date of receipt. After reconstitution, at 4°C for one month. It can also be aliquotted and stored frozen at -20°C for six months. Avoid repeated freezing and thawing.
Host	Rabbit
Uniprot ID	Q58WW2

### Technical Details

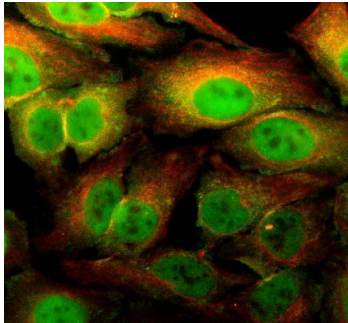
Immunogen	E.coli-derived human DCAF6 recombinant protein (Position: E22-S825). Human DCAF6 shares 85.7% amino acid (aa) sequence identity with mouse DCAF6.
Form	Lyophilized
Concentration	Adding 0.2 ml of distilled water will yield a concentration of 500 ug/ml.
Purification	Immunogen affinity purified.
Suggested Dilutions	Western blot, 0.25-0.5 ug/ml, Human, Mouse Immunocytochemistry/Immunofluorescence, 5 ug/ml, Human Flow Cytometry (Fixed), 1-3 ug/1x10 <sup>6</sup> cells, Human ELISA, 0.1-0.5 ug/ml



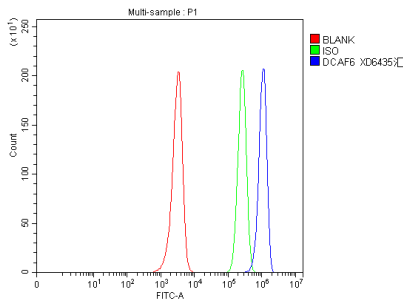
## Anti-DCAF6 Antibody Picoband® (A08950-1) Images



Western blot analysis of DCAF6 using anti-DCAF6 antibody (A08950-1). Electrophoresis was performed on a 10% SDS-PAGE gel at 80V (Stacking gel) / 120V (Resolving gel) for 2 hours. The sample well of each lane was loaded with 30 ug of sample under reducing conditions. Lane 1: human HEL whole cell lysates, Lane 2: human K562 whole cell lysates, Lane 3: mouse testis tissue lysates, Lane 4: mouse skeletal muscle tissue lysates. After electrophoresis, proteins were transferred to a nitrocellulose membrane at 150 mA for 50-90 minutes. Blocked the membrane with 5% non-fat milk/TBS for 1.5 hour at RT. The membrane was incubated with rabbit anti-DCAF6 antigen affinity purified polyclonal antibody (A08950-1) at 0.5 ug/mL overnight at 4°C, then washed with TBS-0.1% Tween 3 times with 5 minutes each and probed with a goat anti-rabbit IgG-HRP secondary antibody at a dilution of 1:5000 for 1.5 hour at RT. The signal is developed using an ECL Plus Western Blotting Substrate (Catalog # AR1196-200) with Tanon 5200 system. A specific band was detected for DCAF6 at approximately 96 kDa. The expected band size for DCAF6 is at 96 kDa.



IF analysis of DCAF6 using anti-DCAF6 antibody (A08950-1) and anti-Alpha Tubulin antibody (M03989-3). DCAF6 was detected in an immunocytochemical section of HeLa cells. Enzyme antigen retrieval was performed using IHC enzyme antigen retrieval reagent (AR0022) for 15 mins. The cells were blocked with 10% goat serum. And then incubated with 5 ug/mL rabbit anti-DCAF6 Antibody (A08950-1) and mouse anti-Alpha Tubulin antibody (M03989-3) overnight at 4°C. DyLight®488 Conjugated Goat Anti-Rabbit IgG (BA1127) and Cy3 Conjugated Goat Anti-Mouse IgG (BA1031) were used as secondary antibody at 1:500 dilution and incubated for 30 minutes at 37°C. Visualize using a fluorescence microscope and filter sets appropriate for the label used.



Flow Cytometry analysis of HEL cells using anti-DCAF6 antibody (A08950-1). Overlay histogram showing HEL cells stained with A08950-1 (Blue line). To facilitate intracellular staining, cells were fixed with 4% paraformaldehyde and permeabilized with permeabilization buffer. The cells were blocked with 10% normal goat serum. And then incubated with rabbit anti-DCAF6 Antibody (A08950-1, 1 ug/1x10<sup>6</sup> cells) for 30 min at 20°C. DyLight®488 conjugated goat anti-rabbit IgG (BA1127, 5-10 ug/1x10<sup>6</sup> cells) was used as secondary antibody for 30 minutes at 20°C. Isotype control antibody (Green line) was rabbit IgG (1 ug/1x10<sup>6</sup>) used under the same conditions. Unlabelled sample without incubation with primary antibody and secondary antibody (Red line) was used as a blank control.

Submit a review of this product to Biocompare.com to receive a \$20 Amazon.com giftcard! Your reviews help your fellow scientists make the right decisions. Thank you for your contribution.



### Anti-DCAF6 Antibody

For Research Use Only. Not for use in diagnostic procedures.