

Anti-TREX2 Antibody

Catalog Number: A08960

About TREX2

TREX2 is one of two major human 3' to 5' exonucleases which are required for checkpoint signaling after DNA damage. While the related protein TREX1 is required for ATR expression and mutations in this gene result in Aicardi-Goutieres syndrome, chilblain lupus, and Cree encephalitis, less is known about TREX2. Like TREX1, TREX2 is ubiquitously expressed in all tissues examined. X-ray crystallography studies of TREX2-single strand DNA complexes revealed that TREX2 binds DNA as a dimer and may act to displace the second DNA strand, suggesting that TREX2 unzips and denatures double stranded DNA and feed the substrate DNA strand into the TREX2 active site. At least two isoforms of TREX2 are known to exist.

Overview

Product Name	Anti-TREX2 Antibody
Reactive Species	Human, Mouse, Rat
Description	Boster Bio Anti-TREX2 Antibody (Catalog # A08960). Tested in ELISA, WB, IHC-P, IF applications. This antibody reacts with Human, Mouse, Rat.
Application	ELISA, IF, IHC-P, WB
Clonality	Polyclonal
Formulation	TREX2 Antibody is supplied in PBS containing 0.02% sodium azide.
Storage Instructions	Antibody can be stored at 4°C up to one year. Antibodies should not be exposed to prolonged high temperatures.
Host	Rabbit
Uniprot ID	Q9BQ50

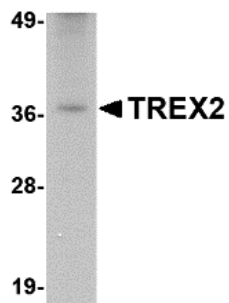
Technical Details

Immunogen	TREX2 antibody was raised against a 15 amino acid synthetic peptide near the carboxy terminus of human TREX2. The immunogen is located within the last 50 amino acids of TREX2.
Predicted Reactive Species	Bovine
Cross Reactivity	This TREX2 antibody will not cross-react with the related protein TREX1.
Isotype	IgG
Form	Liquid
Concentration	1 mg/mL
Purification	TREX2 Antibody is affinity chromatography purified via peptide column.

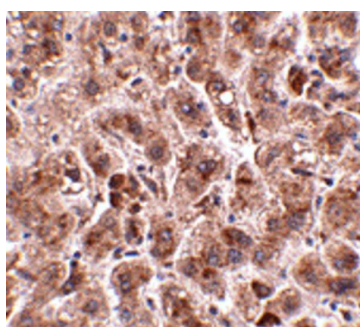
Suggested Dilutions

TREX2 antibody can be used for detection of TREX2 by Western blot at 2.5 ug/mL. Antibody can also be used for immunohistochemistry starting at 2.5 ug/mL. For immunofluorescence start at 20 ug/mL. Antibody validated: Western Blot in rat samples; Immunohistochemistry in human samples and Immunofluorescence in human samples. All other applications and species not yet tested. Optimal dilutions for each application should be determined by the researcher.

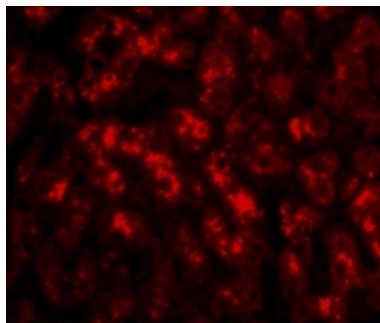
Anti-TREX2 Antibody (A08960) Images



Western blot analysis of TREX2 in rat liver tissue lysate with TREX2 antibody at 2.5 ug/mL.



Immunohistochemistry of TREX2 in human liver tissue with TREX2 antibody at 2.5 ug/mL.



Immunofluorescence of TREX2 in Human Liver cells with TREX2 antibody at 20 ug/mL.

Submit a product review to [Biocompare.com](https://www.biocompare.com)

Submit a review of this product to [Biocompare.com](https://www.biocompare.com) to receive a \$20 Amazon.com giftcard! Your reviews help your fellow scientists make the right decisions. Thank you for your contribution.



Anti-TREX2 Antibody

For Research Use Only. Not for use in diagnostic procedures.