

Anti-SLIT and NTRK-like protein 6 Slitrk6 Antibody

Catalog Number: A09006

About SLITRK6

SLIT and NTRK-like family 6 (Slitrk6) is a member a protein family consisting of six homologous transmembrane proteins (Slitrk1-6) that share two conserved leucine-rich repeat domains in the extracellular domain and have significant homology to Slit, a secreted axonal growth-controlling protein. These proteins are also homologous to trk neurotrophin receptors in their intracellular domains. Expression of Slitrk proteins is highly restricted to neural and brain tumor tissues, but varies within the protein family. Slitrk6 expression has been observed in tissues such as tongue, lung, gastrointestinal tract, and pancreas. Like every other Slitrk protein except Slitrk1, overexpression of Slitrk6 inhibited neurite outgrowth in cultured neurons, suggesting that these proteins are involved in the control of neurite outgrowth. At least two isoforms of Slitrk6 are known to exist.

Overview

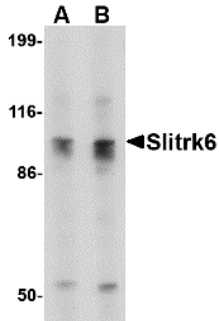
Product Name	Anti-SLIT and NTRK-like protein 6 Slitrk6 Antibody
Reactive Species	Human, Mouse, Rat
Description	Boster Bio Anti-SLIT and NTRK-like protein 6 Slitrk6 Antibody (Catalog # A09006). Tested in ELISA, WB, IHC-P, IF applications. This antibody reacts with Human, Mouse, Rat.
Application	ELISA, IF, IHC-P, WB
Clonality	Polyclonal
Formulation	Slitrk6 Antibody is supplied in PBS containing 0.02% sodium azide.
Storage Instructions	Antibody can be stored at 4°C up to one year. Antibodies should not be exposed to prolonged high temperatures.
Host	Rabbit
Uniprot ID	Q9H5Y7

Technical Details

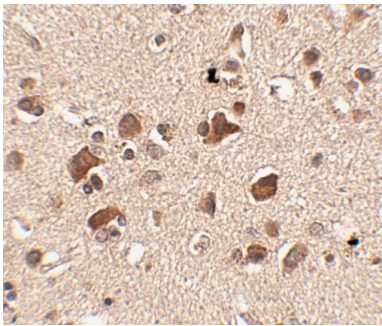
Immunogen	Slitrk6 antibody was raised against a 16 amino acid synthetic peptide from near the carboxy terminus of human Slitrk6. The immunogen is located within amino acids 720 - 770 of Slitrk6.
Predicted Reactive Species	Mouse
Cross Reactivity	This antibody is predicted to have no cross-reactivity to other Slitrk proteins.
Isotype	IgG
Form	Liquid
Concentration	1 mg/mL

Purification	Slitrk6 Antibody is affinity chromatography purified via peptide column.
Suggested Dilutions	Slitrk6 antibody can be used for detection of Slitrk6 by Western blot at 0.5 - 1 ug/mL. Antibody can also be used for immunohistochemistry starting at 2.5 ug/mL. For immunofluorescence start at 20 ug/mL. Antibody validated: Western Blot in human samples; Immunohistochemistry in human samples and Immunofluorescence in human samples. All other applications and species not yet tested. Optimal dilutions for each application should be determined by the researcher.

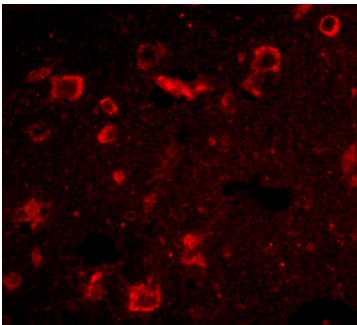
Anti-SLIT and NTRK-like protein 6 Slitrk6 Antibody (A09006) Images



Western blot analysis of Slitrk6 in SK-N-SH cell lysate with Slitrk6 antibody at (A) 0.5 and (B) 1 ug/mL.



Immunohistochemistry of Slitrk6 in human brain tissue with Slitrk6 antibody at 2.5 ug/mL.



Immunofluorescence of Slitrk6 in Human Brain cells with Slitrk6 antibody at 20 ug/mL.

Submit a product review to [Biocompare.com](https://www.biocompare.com)

Submit a review of this product to [Biocompare.com](https://www.biocompare.com) to receive a \$20 Amazon.com giftcard! Your reviews help your fellow scientists make the right decisions. Thank you for your contribution.



Anti-SLIT and NTRK-like protein 6 Slitrk6 Antibody

For Research Use Only. Not for use in diagnostic procedures.