

Anti-XPLN ARHGEF3 Antibody

Catalog Number: A09012-1

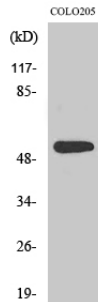
Overview

Product Name	Anti-XPLN ARHGEF3 Antibody
Reactive Species	Human, Mouse, Rat
Description	Boster Bio Anti-XPLN ARHGEF3 Antibody catalog # A09012-1. Tested in WB, IHC, IF, ELISA applications. This antibody reacts with Human, Mouse, Rat.
Application	ELISA, IF, IHC, WB
Clonality	Polyclonal
Formulation	Liquid in PBS containing 50% glycerol, 0.5% stabilizing protein and 0.02% sodium azide. This antibody is supplied in a stabilized formulation. Compatibility with conjugation reactions depends on the chemistry of the conjugation method used. For conjugation methods that are not compatible with the stabilizing components present in this formulation, a carrier-free antibody format is required.
Storage Instructions	Store at -20°C for one year. For short term storage and frequent use, store at 4°C for up to one month. Avoid repeated freeze-thaw cycles.
Host	Rabbit
Uniprot ID	Q9NR81

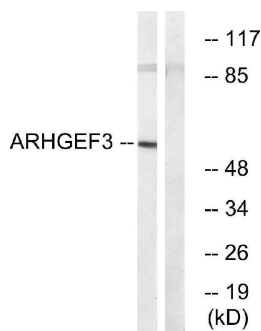
Technical Details

Immunogen	The antiserum was produced against synthesized peptide derived from human ARHGEF3. AA range:456-505
Cross Reactivity	No cross reactivity with other proteins.
Isotype	IgG
Form	Liquid
Concentration	1 mg/ml
Purification	Immunogen affinity purified
Suggested Dilutions	WB 1:500-1:2000 IHC:1:50-300 ELISA 1:20000 IF 1:50-200

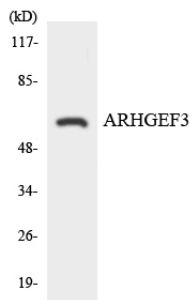
Anti-XPLN ARHGEF3 Antibody (A09012-1) Images



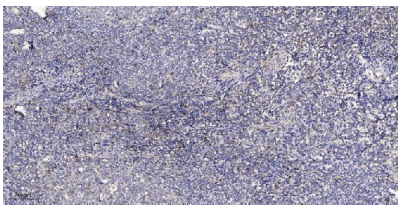
Western Blot analysis of various cells using XPLN Polyclonal Antibody. Secondary antibody was diluted at 1:20000



Western blot analysis of lysates from COLO cells, using ARHGEF3 Antibody. The lane on the right is blocked with the synthesized peptide.



Western blot analysis of the lysates from HeLa cells using ARHGEF3 antibody.



Immunohistochemical analysis of paraffin-embedded human tonsil. 1, Antibody was diluted at 1:200 (4° overnight). 2, Tris-EDTA, pH9.0 was used for antigen retrieval. 3, Secondary antibody was diluted at 1:200 (room temperature, 30min).

Submit a product review to [Biocompare.com](https://www.biocompare.com)

Submit a review of this product to [Biocompare.com](https://www.biocompare.com) to receive a \$20 Amazon.com giftcard! Your reviews help your fellow scientists make the right decisions. Thank you for your contribution.



Anti-XPLN ARHGEF3 Antibody

For Research Use Only. Not for use in diagnostic procedures.