

## Anti-SDCCAG1/NEMF Antibody Picoband®

Catalog Number: A09039-2

### About NEMF

Nuclear export mediator factor (NEMF) is a protein that in humans is encoded by the NEMF gene. This gene encodes a component of the ribosome quality control complex. The encoded protein facilitates the recognition and ubiquitination of stalled 60S subunits by the ubiquitin ligase listerin. A similar protein in fly functions as a tumor suppressor.

### Overview

|                      |   |
|----------------------|---|
| Product Name         | Anti-SDCCAG1/NEMF Antibody Picoband®  |
| Reactive Species     | Human   |
| Description          | Boster Bio Anti-SDCCAG1/NEMF Antibody Picoband® catalog # A09039-2. Tested in ELISA, IF, ICC, WB applications. This antibody reacts with Human. The brand Picoband indicates this is a premium antibody that guarantees superior quality, high affinity, and strong signals with minimal background in Western blot applications. Only our best-performing antibodies are designated as Picoband, ensuring unmatched performance. |
| Application          | ELISA, IF, ICC, WB  |
| Clonality            | Polyclonal  |
| Formulation          | Each vial contains 4 mg Trehalose, 0.9 mg NaCl, 0.2 mg Na <sub>2</sub> HPO <sub>4</sub> .   |
| Storage Instructions | At -20°C for one year from date of receipt. After reconstitution, at 4°C for one month. It can also be aliquotted and stored frozen at -20°C for six months. Avoid repeated freezing and thawing.   |
| Host                 | Rabbit  |
| Uniprot ID           | O60524  |

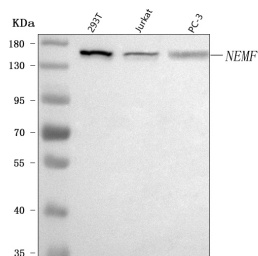
### Technical Details

|                               |   |
|-------------------------------|---|
| Immunogen                     | E.coli-derived human SDCCAG1/NEMF recombinant protein (Position: H81-R607).   |
| Recommended Detection Systems | Boster recommends Enhanced Chemiluminescent Kit with anti-Rabbit IgG (EK1002) for Western blot, and HRP Conjugated anti-Rabbit IgG Super Vision Assay Kit (SV0002-1) for ICC. |
| Cross Reactivity              | No cross-reactivity with other proteins.  |
| Isotype                       | Rabbit IgG  |
| Form                          | Lyophilized   |
| Concentration                 | Adding 0.2 ml of distilled water will yield a concentration of 500 µg/ml.   |
| Purification                  | Immunogen affinity purified.  |

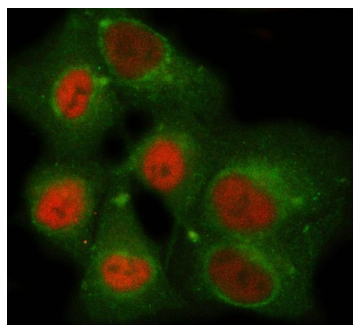
Suggested Dilutions

Western blot, 0.25-0.5 ug/ml, Human  
Immunocytochemistry/Immunofluorescence, 5 ug/ml, Human  
ELISA, 0.1-0.5 ug/ml, -

## Anti-SDCCAG1/NEMF Antibody Picoband® (A09039-2) Images



Western blot analysis of SDCCAG1/NEMF using anti-SDCCAG1/NEMF antibody (A09039-2). Electrophoresis was performed on a 5-20% SDS-PAGE gel at 70V (Stacking gel) / 90V (Resolving gel) for 2-3 hours. The sample well of each lane was loaded with 30 ug of sample under reducing conditions. Lane 1: human 293T whole cell lysates, Lane 2: human Jurkat whole cell lysates, Lane 3: human PC-3 whole cell lysates. After electrophoresis, proteins were transferred to a nitrocellulose membrane at 150 mA for 50-90 minutes. Blocked the membrane with 5% non-fat milk/TBS for 1.5 hour at RT. The membrane was incubated with rabbit anti-SDCCAG1/NEMF antigen affinity purified polyclonal antibody (Catalog # A09039-2) at 0.5 ug/mL overnight at 4°C, then washed with TBS-0.1%Tween 3 times with 5 minutes each and probed with a goat anti-rabbit IgG-HRP secondary antibody at a dilution of 1:5000 for 1.5 hour at RT. The signal is developed using an Enhanced Chemiluminescent detection (ECL) kit (Catalog # EK1002) with Tanon 5200 system. A specific band was detected for SDCCAG1/NEMF at approximately 140 kDa. The expected band size for SDCCAG1/NEMF is at 123,130-140 kDa.



IF analysis of SDCCAG1/NEMF using anti-SDCCAG1/NEMF antibody (A09039-2) and anti-Beta Tubulin antibody (M01857-3). SDCCAG1/NEMF was detected in immunocytochemical section of A549 cell. Enzyme antigen retrieval was performed using IHC enzyme antigen retrieval reagent (AR0022) for 15 mins. The cells were blocked with 10% goat serum. And then incubated with 5 ug/mL rabbit anti-SDCCAG1/NEMF Antibody (A09039-2) and mouse anti-Beta Tubulin antibody (M01857-3) overnight at 4°C. Cy3 Conjugated Goat Anti-Rabbit IgG (BA1032) and DyLight®488 Conjugated Goat Anti-Mouse IgG (BA1126) were used as secondary antibody at 1:500 dilution and incubated for 30 minutes at 37°C. Visualize using a fluorescence microscope and filter sets appropriate for the label used.

### Submit a product review to [Biocompare.com](https://www.biocompare.com)

Submit a review of this product to [Biocompare.com](https://www.biocompare.com) to receive a \$20 Amazon.com giftcard! Your reviews help your fellow scientists make the right decisions. Thank you for your contribution.



Anti-SDCCAG1/NEMF Antibody

For Research Use Only. Not for use in diagnostic procedures.