

Anti-ZIP10 SLC39A10 Antibody

Catalog Number: A09043

About SLC39A10

ZIP10, also known as Slc39A10, is a widely expressed zinc transporter with nine transmembrane domains. Zinc is an essential ion for cells and plays significant roles in the growth, development, and differentiation. ZIP10 mRNA was found to be significantly decreased in the intestines and kidneys of hypothyroid rats and increased in those of hyperthyroid rats, indicating that ZIP10 is positively regulated by thyroid hormones. ZIP10 mRNA was also found to be upregulated in invasive and metastatic breast cancer and cell lines, suggesting that ZIP10 could serve as a possible marker for the metastatic phenotype and possibly a target for novel treatment strategies. At least three isoforms of ZIP10 are known to exist.

Overview

Product Name	Anti-ZIP10 SLC39A10 Antibody
Reactive Species	Human, Mouse, Rat
Description	Boster Bio Anti-ZIP10 SLC39A10 Antibody (Catalog # A09043). Tested in ELISA, WB, IHC-P applications. This antibody reacts with Human, Mouse, Rat.
Application	ELISA, IHC-P, WB
Clonality	Polyclonal
Formulation	ZIP10 Antibody is supplied in PBS containing 0.02% sodium azide.
Storage Instructions	ZIP10 antibody can be stored at 4°C for three months and -20°C, stable for up to one year. Avoid repeated freeze-thaw cycles. Antibodies should not be exposed to prolonged high temperatures.
Host	Rabbit
Uniprot ID	Q9ULF5

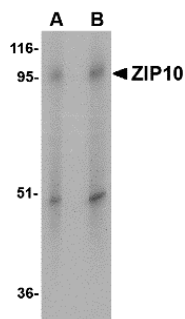
Technical Details

Immunogen	ZIP10 antibody was raised against a 17 amino acid synthetic peptide near the center of the human ZIP10. The immunogen is located within amino acids 490 - 540 of ZIP10.
Predicted Reactive Species	Chicken
Cross Reactivity	This antibody will not cross-react with the zinc transporter ZIP11.
Isotype	IgG
Form	Liquid
Concentration	1 mg/mL
Purification	ZIP10 Antibody is affinity chromatography purified via peptide column.

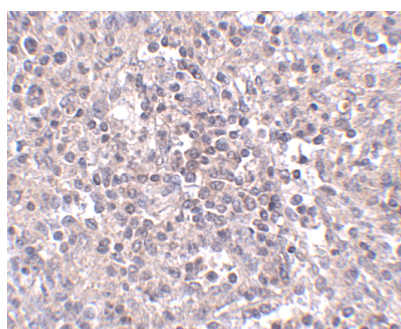
Suggested Dilutions

ZIP10 antibody can be used for detection of ZIP10 by Western blot at 1 - 2 ug/mL. Antibody can also be used for immunohistochemistry starting at 2.5 ug/mL.
Antibody validated: Western Blot in human samples and Immunohistochemistry in human samples.
All other applications and species not yet tested. Optimal dilutions for each application should be determined by the researcher.

Anti-ZIP10 SLC39A10 Antibody (A09043) Images



Western blot analysis of ZIP10 in human spleen tissue lysate with ZIP10 antibody at (A) 1 and (B) 2 ug/mL.



Immunohistochemistry of ZIP10 in human spleen tissue with ZIP10 antibody at 2.5 ug/mL.

Submit a product review to [Biocompare.com](https://www.biocompare.com)

Submit a review of this product to [Biocompare.com](https://www.biocompare.com) to receive a \$20 Amazon.com giftcard! Your reviews help your fellow scientists make the right decisions. Thank you for your contribution.



Anti-ZIP10 SLC39A10 Antibody

For Research Use Only. Not for use in diagnostic procedures.