

Anti-SLC1A7 Antibody

Catalog Number: A09067

About SLC1A7

The solute carrier family 1 member 7 (SLC1A7) protein was initially identified as a glutamate transporter coupled to a chloride conductance that is expressed primarily in the retina (1). More recent evidence indicates that it is widely expressed in peripheral tissues, also (2). Experiments have shown that SLC1A7 functions as a low-affinity/low-capacity glutamate transport, with an anion channel optimized for anion conductance in the negative voltage range (3). In the retina, SLC1A7 co-localizes with the serum and glucocorticoid dependent kinase SGK1, and its cell surface expression and activity is regulated SGK1 and its isoform SGK3 (4).

Overview

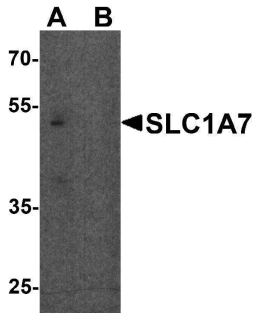
| | |
|----------------------|--|
| Product Name | Anti-SLC1A7 Antibody |
| Reactive Species | Human, Mouse |
| Description | Boster Bio Anti-SLC1A7 Antibody (Catalog # A09067). Tested in ELISA, WB, IHC-P, IF applications. This antibody reacts with Human, Mouse. |
| Application | ELISA, IF, IHC-P, WB |
| Clonality | Polyclonal |
| Formulation | SLC1A7 antibody is supplied in PBS containing 0.02% sodium azide. |
| Storage Instructions | SLC1A7 antibody can be stored at 4°C for three months and -20°C, stable for up to one year. |
| Host | Rabbit |
| Uniprot ID | O00341 |

Technical Details

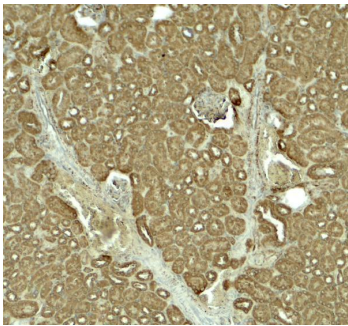
| | |
|----------------------------|--|
| Immunogen | SLC1A7 antibody was raised against a 14 amino acid peptide near the carboxy terminus of human SLC1A7. The immunogen is located within amino acids 460 - 510 of SLC1A7. |
| Predicted Reactive Species | Chicken |
| Cross Reactivity | SLC1A7 antibody is human and mouse reactive. Multiple isoforms of SLC1A7 are known to exist. |
| Isotype | IgG |
| Form | Liquid |
| Concentration | 1 mg/mL |
| Purification | SLC1A7 antibody is affinity chromatography purified via peptide column. |
| Suggested Dilutions | SLC1A7 antibody can be used for detection of SLC1A7 by Western blot at 1 - 2 ug/ml. Antibody can |

also be used for immunohistochemistry starting at 5 ug/mL. For immunofluorescence start at 20 ug/mL.
Antibody validated: Western Blot in mouse samples; Immunohistochemistry in mouse samples and Immunofluorescence in mouse samples. All other applications and species not yet tested. Optimal dilutions for each application should be determined by the researcher.

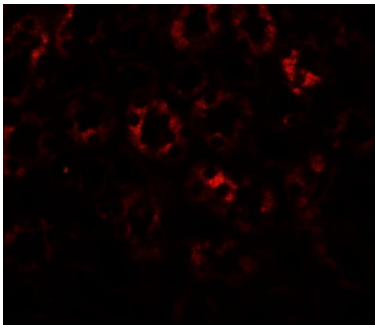
Anti-SLC1A7 Antibody (A09067) Images



Western blot analysis of SLC1A7 in C2C12 cell lysate with SLC1A7 antibody at 1 ug/ml in (A) the absence and (B) the presence of blocking peptide.



Immunohistochemistry of SLC1A7 in mouse kidney tissue with SLC1A7 antibody at 5 ug/ml.



Immunofluorescence of SLC1A7 in mouse kidney tissue with SLC1A7 antibody at 20 ug/ml.

Submit a product review to [Biocompare.com](https://www.biocompare.com)

Submit a review of this product to [Biocompare.com](https://www.biocompare.com) to receive a \$20 Amazon.com giftcard! Your reviews help your fellow scientists make the right decisions. Thank you for your contribution.



Anti-SLC1A7 Antibody

For Research Use Only. Not for use in diagnostic procedures.