

Anti-SCGF CLEC11A Antibody

Catalog Number: A09076

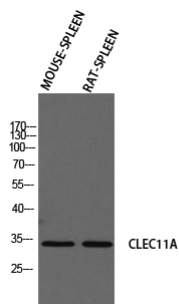
Overview

Product Name	Anti-SCGF CLEC11A Antibody
Reactive Species	Human, Mouse
Description	Boster Bio Anti-SCGF CLEC11A Antibody catalog # A09076. Tested in WB, IHC, IF, ELISA applications. This antibody reacts with Human, Mouse.
Application	ELISA, IF, IHC, WB
Clonality	Polyclonal
Formulation	Liquid in PBS containing 50% glycerol, 0.5% stabilizing protein and 0.02% sodium azide. This antibody is supplied in a stabilized formulation. Compatibility with conjugation reactions depends on the chemistry of the conjugation method used. For conjugation methods that are not compatible with the stabilizing components present in this formulation, a carrier-free antibody format is required.
Storage Instructions	Store at -20°C for one year. For short term storage and frequent use, store at 4°C for up to one month. Avoid repeated freeze-thaw cycles.
Host	Rabbit
Uniprot ID	Q9Y240

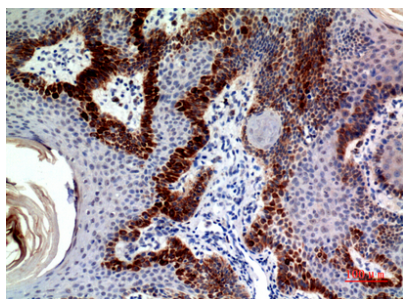
Technical Details

Immunogen	The antiserum was produced against synthesized peptide derived from the N-terminal region of human CLEC11A. AA range:1-50
Cross Reactivity	No cross reactivity with other proteins.
Isotype	IgG
Form	Liquid
Concentration	1 mg/ml
Purification	The antibody was affinity-purified from rabbit antiserum by affinity-chromatography using a epitope-specific immunogen.
Suggested Dilutions	WB 1:500-1:2000 IHC: 1:100-1:300 ELISA 1:10000 IF 1:50-200

Anti-SCGF CLEC11A Antibody (A09076) Images



Western blot analysis of MOUSE-SPLEEN RAT-SPLEEN using CLEC11A antibody. Antibody was diluted at 1:2000. Secondary antibody was diluted at 1:20000



Immunohistochemical analysis of paraffin-embedded human skin, antibody was diluted at 1:100

Submit a product review to Biocompare.com

Submit a review of this product to Biocompare.com to receive a \$20 Amazon.com giftcard! Your reviews help your fellow scientists make the right decisions. Thank you for your contribution.



Anti-SCGF CLEC11A Antibody

For Research Use Only. Not for use in diagnostic procedures.