

Anti-ATAD3B Antibody

Catalog Number: A09088

About ATAD3B

ATAD3B is a member of the AAA ATPase family, a family of proteins that catalyze ATP into ADP and are involved in several cellular functions such as cell-cycle regulation, protein proteolysis and transport. The AAA ATPase family is characterized by a highly conserved AAA motif containing Walker homology sequences and imparting ATPase activity. Mitochondrial membrane proteins ATAD3A/B contribute to the stabilization of nucleoids and may participate in the transformation pathway and the chemosensitivity of oligodendrogliomas. The gene encoding ATAD3A/B/C maps to human chromosome 1 and has been suggested to be an anti-apoptotic marker.

Overview

Product Name	Anti-ATAD3B Antibody
Reactive Species	Human
Description	Boster Bio Anti-ATAD3B Antibody (Catalog # A09088). Tested in ELISA, WB, IHC-P applications. This antibody reacts with Human.
Application	ELISA, IHC-P, WB
Clonality	Polyclonal
Formulation	ATAD3B Antibody is supplied in PBS containing 0.02% sodium azide.
Storage Instructions	ATAD3B antibody can be stored at 4°C for three months and -20°C, stable for up to one year. Avoid repeated freeze-thaw cycles. Antibodies should not be exposed to prolonged high temperatures.
Host	Rabbit
Uniprot ID	Q5T9A4

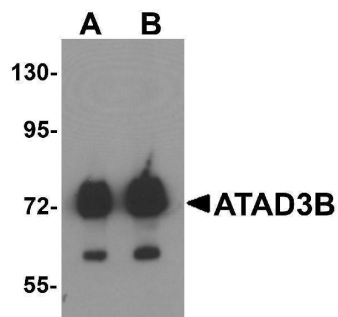
Technical Details

Immunogen	ATAD3B antibody was raised against a 14 amino acid synthetic peptide near the carboxy terminus of human ATAD3B. The immunogen is located within amino acids 570 - 620 of ATAD3B.
Predicted Reactive Species	Bovine
Cross Reactivity	ATAD3B antibody is predicted to not cross-react with other ATAD protein family members. At least three isoforms of ATAD3B are known to exist.
Isotype	IgG
Form	Liquid
Concentration	1 mg/mL
Purification	ATAD3B Antibody is affinity chromatography purified via peptide column.

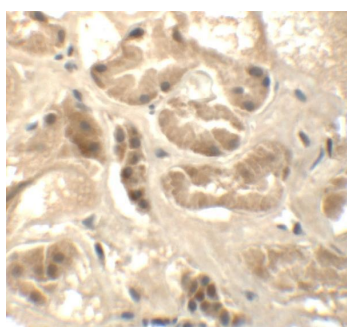
Suggested Dilutions

ATAD3B antibody can be used for detection of ATAD3B by Western blot at 1 - 2 ug/mL. Antibody can also be used for immunohistochemistry starting at 5 ug/mL.
Antibody validated: Western Blot in human samples and Immunohistochemistry in human samples. All other applications and species not yet tested. Optimal dilutions for each application should be determined by the researcher.

Anti-ATAD3B Antibody (A09088) Images



Western blot analysis of ATAD3B in human kidney tissue lysate with ATAD3B antibody at (A) 1 and (B) 2 ug/mL .



Immunohistochemistry of ATAD3B in human kidney tissue with ATAD3B antibody at 5 ug/mL.

Submit a product review to [Biocompare.com](https://www.biocompare.com)

Submit a review of this product to [Biocompare.com](https://www.biocompare.com) to receive a \$20 Amazon.com giftcard! Your reviews help your fellow scientists make the right decisions. Thank you for your contribution.



Anti-ATAD3B Antibody

For Research Use Only. Not for use in diagnostic procedures.