

Anti-SCUBE3 Antibody

Catalog Number: A09090

About SCUBE3

SCUBE3 is a member of a family of secreted glycoproteins that contain N-terminal EGF-like repeats and C-terminal cysteine-rich motifs and CUB domain and is highly expressed in primary osteoblasts and bones, and to a lesser extent in heart (1,2). Other studies have shown that overexpression of SCUBE3 in mice induced cardiac hypertrophy, suggesting that it may also play a role in the regulation of cardiac growth. SCUBE3 has been shown to be an endogenous TGF-beta receptor ligand (3,4) and is thought to promote lung cancer cell mobility and invasiveness. In lung cancer cells, the secreted SCUBE3 protein was cleaved by MMP2 and MMP9, allowing the activation of the TGF-beta receptor, the increase of Smad2/3 transcriptional activity and the upregulation of expression of proteins such as TGF-beta1, VEGF, Snail, and Slug.

Overview

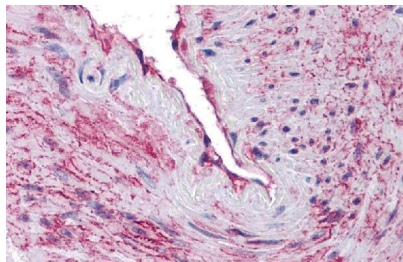
Product Name	Anti-SCUBE3 Antibody
Reactive Species	Human
Description	Boster Bio Anti-SCUBE3 Antibody (Catalog # A09090). Tested in ELISA, IHC-P applications. This antibody reacts with Human.
Application	ELISA, IHC-P
Clonality	Polyclonal
Formulation	SCUBE3 Antibody is supplied in PBS containing 0.02% sodium azide.
Storage Instructions	SCUBE3 antibody can be stored at 4°C for three months and -20°C, stable for up to one year.
Host	Rabbit
Uniprot ID	Q8IX30

Technical Details

Immunogen	SCUBE3 antibody was raised against a 15 amino acid peptide near the center of human SCUBE3. The immunogen is located within amino acids 440 - 490 of SCUBE3.
Predicted Reactive Species	Bovine
Isotype	IgG
Form	Liquid
Concentration	1 mg/mL
Purification	SCUBE3 Antibody is affinity chromatography purified via peptide column.
Suggested Dilutions	SCUBE3 antibody can be used for detection of SCUBE3 by immunohistochemistry at 5 ug/mL.

Antibody validated: Immunohistochemistry in human samples. All other applications and species not yet tested. Optimal dilutions for each application should be determined by the researcher.

Anti-SCUBE3 Antibody (A09090) Images



Immunohistochemistry of SCUBE3 in human blood vessel tissue with SCUBE3 antibody at 10 ug/mL.

Submit a product review to [Biocompare.com](https://www.biocompare.com)

Submit a review of this product to [Biocompare.com](https://www.biocompare.com) to receive a \$20 Amazon.com giftcard! Your reviews help your fellow scientists make the right decisions. Thank you for your contribution.



Anti-SCUBE3 Antibody

For Research Use Only. Not for use in diagnostic procedures.