

Anti-SCUBE3 Antibody

Catalog Number: A09090-1

About SCUBE3

SCUBE3 is a member of a family of secreted glycoproteins that contain N-terminal EGF-like repeats and C-terminal cysteine-rich motifs and CUB domain and is highly expressed in primary osteoblasts and bones, and to a lesser extent in heart. Other studies have shown that overexpression of SCUBE3 in mice induced cardiac hypertrophy, suggesting that it may also play a role in the regulation of cardiac growth. SCUBE3 has been shown to be an endogenous TGF-beta receptor ligand and is thought to promote lung cancer cell mobility and invasiveness. In lung cancer cells, the secreted SCUBE3 protein was cleaved by MMP2 and MMP9, allowing the activation of the TGF-beta receptor, the increase of Smad2/3 transcriptional activity and the upregulation of expression of proteins such as TGF-beta1, VEGF, Snail, and Slug.

Overview

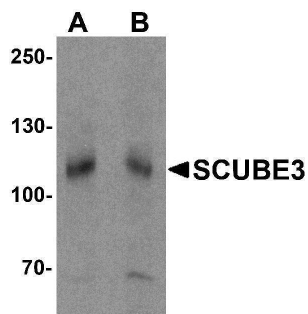
Product Name	Anti-SCUBE3 Antibody
Reactive Species	Human, Mouse
Description	Boster Bio Anti-SCUBE3 Antibody (Catalog # A09090-1). Tested in ELISA, WB, IF applications. This antibody reacts with Human, Mouse.
Application	ELISA, IF, WB
Clonality	Polyclonal
Formulation	SCUBE3 Antibody is supplied in PBS containing 0.02% sodium azide.
Storage Instructions	Antibody can be stored at 4°C up to one year. Antibodies should not be exposed to prolonged high temperatures.
Host	Rabbit
Uniprot ID	Q8IX30

Technical Details

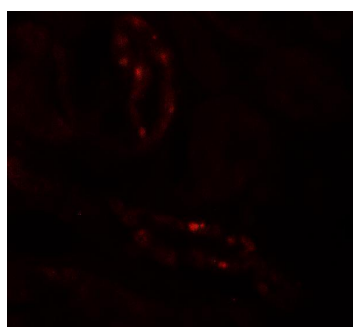
Immunogen	SCUBE3 antibody was raised against a 15 amino acid synthetic peptide near the center of human SCUBE3. The immunogen is located within amino acids 210 - 260 of SCUBE3.
Predicted Reactive Species	Bovine
Cross Reactivity	At least two isoforms of SCUBE3 are known to exist. SCUBE3 antibody is predicted to not cross-react with other SCUBE members
Isotype	IgG
Form	Liquid
Concentration	1 mg/mL

Purification	SCUBE3 Antibody is affinity chromatography purified via peptide column.
Suggested Dilutions	SCUBE3 antibody can be used for detection of SCUBE3 by Western blot at 1 - 2 ug/mL. For immunofluorescence start at 20 ug/mL. Antibody validated: Western Blot in mouse samples and Immunofluorescence in human samples. All other applications and species not yet tested. Optimal dilutions for each application should be determined by the researcher.

Anti-SCUBE3 Antibody (A09090-1) Images



Western blot analysis of SCUBE3 in mouse kidney tissue lysate with SCUBE3 antibody at (A) 1 and (B) 2 ug/mL.



Immunofluorescence of SCUBE3 in human kidney tissue with SCUBE3 antibody at 20 ug/mL.

Submit a product review to [Biocompare.com](https://www.biocompare.com)

Submit a review of this product to [Biocompare.com](https://www.biocompare.com) to receive a \$20 Amazon.com giftcard! Your reviews help your fellow scientists make the right decisions. Thank you for your contribution.



Anti-SCUBE3 Antibody

For Research Use Only. Not for use in diagnostic procedures.