

## Anti-SLC25A25 Antibody (N-term)

Catalog Number: A09109

### About SLC25A25

Calcium-dependent mitochondrial solute carrier. Mitochondrial solute carriers shuttle metabolites, nucleotides, and cofactors through the mitochondrial inner membrane. May act as a ATP-Mg/Pi exchanger that mediates the transport of Mg-ATP in exchange for phosphate, catalyzing the net uptake or efflux of adenine nucleotides into or from the mitochondria.

### Overview

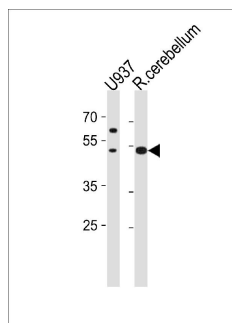
Product Name	Anti-SLC25A25 Antibody (N-term)
Reactive Species	Human, Rat
Description	Boster Bio Anti-SLC25A25 Antibody (N-term) (Catalog # A09109). Tested in IHC-P, WB application(s). This antibody reacts with Human, Rat.
Application	IHC-P, WB
Clonality	Polyclonal
Formulation	Purified polyclonal antibody supplied in PBS with 0.09% (W/V) sodium azide.
Storage Instructions	Maintain refrigerated at 2-8°C for up to 2 weeks. For long-term storage, store at -20°C in small aliquots to prevent freeze-thaw cycles.
Host	Rabbit
Uniprot ID	Q6KCM7

### Technical Details

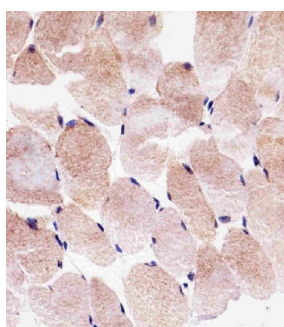
Immunogen	This SLC25A25 antibody is generated from rabbits immunized with a KLH conjugated synthetic peptide between 63-93 amino acids from the N-terminal region of human SLC25A25.
Predicted Reactive Species	Bovine, Mouse, Xenopus, Zebrafish
Isotype	Rabbit IgG
Purification	This antibody is purified through a protein A column, followed by peptide affinity purification.
Suggested Dilutions	Dilute the sample so that the expected range of concentrations fall within the detection range of this kit. If the expected range of concentration is unknown, a pilot test should be conducted to decide the optimal dilution ratio for your samples. Some PubMed article(s) citing the expression level of this target are as follows: Boster Bio's internal QC testing used: WB: 1:1000 IHC-P: 1:25



## Anti-SLC25A25 Antibody (N-term) (A09109) Images



SLC25A25 Antibody (N-term) western blot analysis in U-937 cell line and rat cerebellum tissue lysates (35ug/lane). This demonstrates the SLC25A25 antibody detected the SLC25A25 protein (arrow).



Immunohistochemical analysis of paraffin-embedded H. skeletal muscle section using SLC25A25 Antibody (N-term) (Cat#A09109). A09109 was diluted at 1:25 dilution. A undiluted biotinylated goat polyvalent antibody was used as the secondary, followed by DAB staining.

## Submit a product review to Biocompare.com

Submit a review of this product to Biocompare.com to receive a \$20 Amazon.com giftcard! Your reviews help your fellow scientists make the right decisions. Thank you for your contribution.



Anti-SLC25A25 Antibody (N-term)