

Anti-PLA2G2D Antibody

Catalog Number: A09115

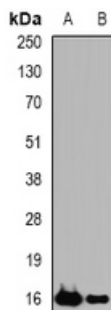
Overview

Product Name	Anti-PLA2G2D Antibody
Reactive Species	Human
Description	Boster Bio Anti-PLA2G2D Antibody catalog # A09115. Tested in WB,IHC,ICC/IF applications. This antibody reacts with Human.
Application	IF, IHC, ICC, WB
Clonality	Polyclonal
Formulation	Rabbit IgG, 1mg/ml in PBS with 0.02% sodium azide, 50% glycerol, pH7.2
Storage Instructions	Store at -20°C for one year. For short term storage and frequent use, store at 4°C for up to one month. Avoid repeated freeze-thaw cycles.
Host	Rabbit
Uniprot ID	Q9UNK4

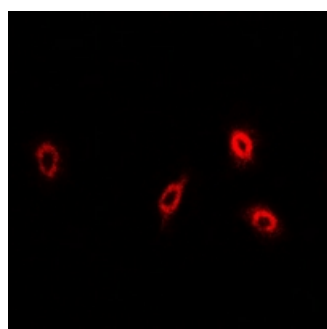
Technical Details

Immunogen	Synthetic peptide, corresponding to Human PLA2G2D.
Isotype	IgG
Form	Liquid
Concentration	1 mg/ml
Purification	The antibody was affinity-purified from rabbit antiserum by affinity-chromatography using epitope-specific immunogen and the purity is > 95% (by SDS-PAGE).
Suggested Dilutions	WB: 1:500-1:1000 IHC: 1:50-1:200 ICC/IF: 1:50-1:200

Anti-PLA2G2D Antibody (A09115) Images



Western blot analysis of sPLA2-IIID expression in HeLa (A), THP1 (B) whole cell lysates.



Immunofluorescent analysis of sPLA2-IIID staining in U2OS cells.

Submit a product review to [Biocompare.com](https://www.biocompare.com)

Submit a review of this product to [Biocompare.com](https://www.biocompare.com) to receive a \$20 Amazon.com giftcard! Your reviews help your fellow scientists make the right decisions. Thank you for your contribution.



Anti-PLA2G2D Antibody

For Research Use Only. Not for use in diagnostic procedures.