

## Anti-ASB9 Antibody (N-term)

Catalog Number: A09121

### About ASB9

Substrate-recognition component of a SCF-like ECS (Elongin-Cullin-SOCS-box protein) E3 ubiquitin-protein ligase complex which mediates the ubiquitination and subsequent proteasomal degradation of target proteins. Recognizes at least two forms of creatine kinase, CKB and CKMT1A.

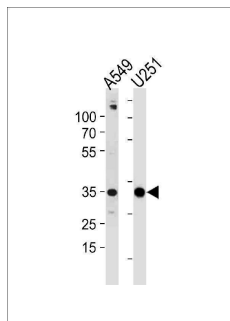
### Overview

Product Name	Anti-ASB9 Antibody (N-term)
Reactive Species	Human
Description	Boster Bio Anti-ASB9 Antibody (N-term) (Catalog # A09121). Tested in WB application(s). This antibody reacts with Human.
Application	WB
Clonality	Polyclonal
Formulation	Purified polyclonal antibody supplied in PBS with 0.09% (W/V) sodium azide.
Storage Instructions	Maintain refrigerated at 2-8°C for up to 2 weeks. For long-term storage, store at -20°C in small aliquots to prevent freeze-thaw cycles.
Host	Rabbit
Uniprot ID	Q96DX5

### Technical Details

Immunogen	This ASB9 antibody is generated from rabbits immunized with a KLH conjugated synthetic peptide between 1-30 amino acids from the N-terminal region of human ASB9.
Predicted Reactive Species	Bovine, Mouse, Xenopus, Zebrafish
Isotype	Rabbit IgG
Purification	This antibody is purified through a protein A column, followed by peptide affinity purification.
Suggested Dilutions	WB: 1:1000

## Anti-ASB9 Antibody (N-term) (A09121) Images



ASB9 Antibody (N-term) western blot analysis in A549,U251 cell line lysates (35ug/lane). This demonstrates the ASB9 antibody detected the ASB9 protein (arrow).

## Submit a product review to Biocompare.com

Submit a review of this product to Biocompare.com to receive a \$20 Amazon.com giftcard! Your reviews help your fellow scientists make the right decisions. Thank you for your contribution.



Anti-ASB9 Antibody (N-term)

For Research Use Only. Not for use in diagnostic procedures.