

## Anti-PEPP2/PLEKHA5 Antibody Picoband®

Catalog Number: A09135-2

### About PLEKHA5

Pleckstrin homology domain-containing family A member 5 is a protein that in humans is encoded by the PLEKHA5 gene. This gene, which encodes a transcriptional repressor, is one of two paralogous X-linked homeobox-containing genes and is highly expressed in a variety of cancers. In addition, the encoded protein associates with the cell membrane and with microtubules and is concentrated at the leading edge of migratory cells.

### Overview

|                      |  |
|----------------------|--|
| Product Name         | Anti-PEPP2/PLEKHA5 Antibody Picoband®  |
| Reactive Species     | Human, Mouse, Rat  |
| Description          | Boster Bio Anti-PEPP2/PLEKHA5 Antibody Picoband® catalog # A09135-2. Tested in ELISA, Flow Cytometry, IF, ICC, WB applications. This antibody reacts with Human, Mouse, Rat. The brand Picoband indicates this is a premium antibody that guarantees superior quality, high affinity, and strong signals with minimal background in Western blot applications. Only our best-performing antibodies are designated as Picoband, ensuring unmatched performance. |
| Application          | ELISA, Flow Cytometry, IF, ICC, WB   |
| Clonality            | Polyclonal   |
| Formulation          | Each vial contains 4 mg Trehalose, 0.9 mg NaCl, 0.2 mg Na <sub>2</sub> HPO <sub>4</sub> .  |
| Storage Instructions | At -20°C for one year from date of receipt. After reconstitution, at 4°C for one month. It can also be aliquotted and stored frozen at -20°C for six months. Avoid repeated freezing and thawing.  |
| Host                 | Rabbit   |
| Uniprot ID           | Q9HAU0   |

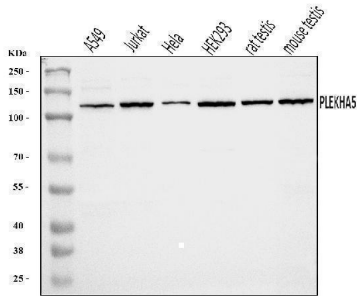
### Technical Details

|                               |   |
|-------------------------------|---|
| Immunogen                     | E.coli-derived human PEPP2/PLEKHA5 recombinant protein (Position: R25-Q905).  |
| Recommended Detection Systems | Boster recommends Enhanced Chemiluminescent Kit with anti-Rabbit IgG (EK1002) for Western blot, and HRP Conjugated anti-Rabbit IgG Super Vision Assay Kit (SV0002-1) for ICC. |
| Cross Reactivity              | No cross-reactivity with other proteins.  |
| Isotype                       | Rabbit IgG  |
| Form                          | Lyophilized   |
| Concentration                 | Adding 0.2 ml of distilled water will yield a concentration of 500 ug/ml.   |
| Purification                  | Immunogen affinity purified.  |

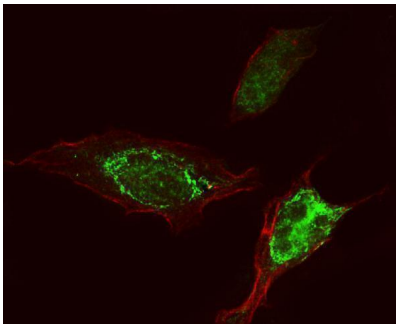
Suggested Dilutions

Western blot, 0.1-0.25 ug/ml, Human, Mouse, Rat  
Immunocytochemistry/Immunofluorescence, 5 ug/ml, Human  
Flow Cytometry (Fixed), 1-3 ug/1x10<sup>6</sup> cells, Human  
ELISA, 0.1-0.5 ug/ml, -

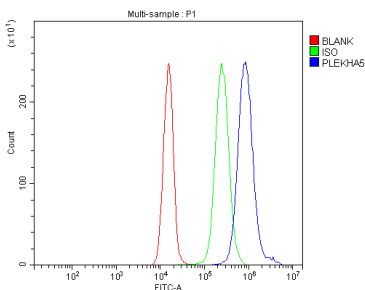
## Anti-PEPP2/PLEKHA5 Antibody Picoband® (A09135-2) Images



Western blot analysis of PEPP2/PLEKHA5 using anti-PEPP2/PLEKHA5 antibody (A09135-2). Electrophoresis was performed on a 5-20% SDS-PAGE gel at 70V (Stacking gel) / 90V (Resolving gel) for 2-3 hours. The sample well of each lane was loaded with 30 ug of sample under reducing conditions. Lane 1: human A549 whole cell lysates, Lane 2: human Jurkat whole cell lysates, Lane 3: human Hela whole cell lysates, Lane 4: human HEK293 whole cell lysates, Lane 5: rat testis tissue lysates, Lane 6: mouse testis tissue lysates. After electrophoresis, proteins were transferred to a nitrocellulose membrane at 150 mA for 50-90 minutes. Blocked the membrane with 5% non-fat milk/TBS for 1.5 hour at RT. The membrane was incubated with rabbit anti-PEPP2/PLEKHA5 antigen affinity purified polyclonal antibody (Catalog # A09135-2) at 0.5 ug/mL overnight at 4°C, then washed with TBS-0.1%Tween 3 times with 5 minutes each and probed with a goat anti-rabbit IgG-HRP secondary antibody at a dilution of 1:5000 for 1.5 hour at RT. The signal is developed using an Enhanced Chemiluminescent detection (ECL) kit (Catalog # EK1002) with Tanon 5200 system. A specific band was detected for PEPP2/PLEKHA5 at approximately 130 kDa. The expected band size for PEPP2/PLEKHA5 is at 130 kDa.



IF analysis of PEPP2/PLEKHA5 using anti-PEPP2/PLEKHA5 antibody (A09135-2). PEPP2/PLEKHA5 was detected in an immunocytochemical section of Hela cells. Enzyme antigen retrieval was performed using IHC enzyme antigen retrieval reagent (AR0022) for 15 mins. The cells were blocked with 10% goat serum. And then incubated with 5 ug/mL rabbit anti-PEPP2/PLEKHA5 Antibody (A09135-2) overnight at 4°C. DyLight®488 Conjugated Goat Anti-Rabbit IgG (BA1127) was used as secondary antibody at 1:100 dilution and incubated for 30 minutes at 37°C. The tissue section was developed using Phalloidin-iFluor 555 Conjugated. Visualize using a fluorescence microscope and filter sets appropriate for the label used.



Flow Cytometry analysis of JK cells using anti-PEPP2/PLEKHA5 antibody (A09135-2). Overlay histogram showing JK cells stained with A09135-2 (Blue line). To facilitate intracellular staining, cells were fixed with 4% paraformaldehyde and permeabilized with permeabilization buffer. The cells were blocked with 10% normal goat serum. And then incubated with rabbit anti-PEPP2/PLEKHA5 Antibody (A09135-2, 1 ug/1x10<sup>6</sup> cells) for 30 min at 20°C. DyLight®488 conjugated goat anti-rabbit IgG (BA1127, 5-10 ug/1x10<sup>6</sup> cells) was used as secondary antibody for 30 minutes at 20°C. Isotype control antibody (Green line) was rabbit IgG (1 ug/1x10<sup>6</sup>) used under the same conditions. Unlabelled sample without incubation with primary antibody and secondary antibody (Red line) was used as a blank control.

## Submit a product review to Biocompare.com

Submit a review of this product to Biocompare.com to receive a \$20 Amazon.com giftcard! Your reviews help your fellow scientists make the right decisions. Thank you for your contribution.



Anti-PEPP2/PLEKHA5 Antibody

For Research Use Only. Not for use in diagnostic procedures.