

Anti-APS SH2B2 Antibody

Catalog Number: A09167

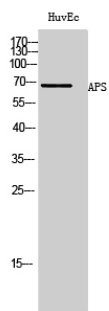
Overview

Product Name	Anti-APS SH2B2 Antibody
Reactive Species	Human, Mouse, Rat
Description	Boster Bio Anti-APS SH2B2 Antibody catalog # A09167. Tested in WB, ELISA applications. This antibody reacts with Human, Mouse, Rat.
Application	ELISA, WB
Clonality	Polyclonal
Formulation	Liquid in PBS containing 50% glycerol, 0.5% stabilizing protein and 0.02% sodium azide. This antibody is supplied in a stabilized formulation. Compatibility with conjugation reactions depends on the chemistry of the conjugation method used. For conjugation methods that are not compatible with the stabilizing components present in this formulation, a carrier-free antibody format is required.
Storage Instructions	Store at -20°C for one year. For short term storage and frequent use, store at 4°C for up to one month. Avoid repeated freeze-thaw cycles.
Host	Rabbit
Uniprot ID	O14492

Technical Details

Immunogen	Synthesized peptide derived from the Internal region of human APS.
Cross Reactivity	No cross reactivity with other proteins.
Isotype	IgG
Form	Liquid
Concentration	1 mg/ml
Purification	Immunogen affinity purified
Suggested Dilutions	WB 1:500-1:2000 ELISA 1:20000

Anti-APS SH2B2 Antibody (A09167) Images



Western Blot analysis of HuvEc cells using APS Polyclonal Antibody

Submit a product review to Biocompare.com

Submit a review of this product to Biocompare.com to receive a \$20 Amazon.com giftcard! Your reviews help your fellow scientists make the right decisions. Thank you for your contribution.



Anti-APS SH2B2 Antibody

For Research Use Only. Not for use in diagnostic procedures.