

## Anti-Precerebellin CBLN1 Antibody

Catalog Number: A09176-3

### About CBLN1

Precerebellin is the precursor of the brain-specific hexadecapeptide cerebellin, a protein with substantial similarity to the globular region of the B chain of complement component C1q. Cerebellin exerts neuromodulatory functions by directly stimulating norepinephrine release via the adenylate cyclase/pka- dependent signaling pathway; and indirectly enhances adrenocortical secretion in vivo, through a paracrine mechanism involving medullary catecholamine release. The active form of precerebellin is highly enriched in postsynaptic structures of cerebellar Purkinje cells in cartwheel neurons of the dorsal cochlear nucleus. Because precerebellin belongs to the C1q/tumor necrosis factor superfamily of secreted proteins and has similarity to adiponectin and CTRP3, it has been suggested that precerebellin possesses functions other than those already stated.

### Overview

Product Name	Anti-Precerebellin CBLN1 Antibody
Reactive Species	Human, Mouse, Rat
Description	Boster Bio Anti-Precerebellin CBLN1 Antibody (Catalog # A09176-3). Tested in ELISA, WB, IHC-P applications. This antibody reacts with Human, Mouse, Rat.
Application	ELISA, IHC-P, WB
Clonality	Polyclonal
Formulation	Precerebellin Antibody is supplied in PBS containing 0.02% sodium azide.
Storage Instructions	Precerebellin antibody can be stored at 4°C for three months and -20°C, stable for up to one year. Avoid repeated freeze-thaw cycles. Antibodies should not be exposed to prolonged high temperatures.
Host	Rabbit
Uniprot ID	P23435

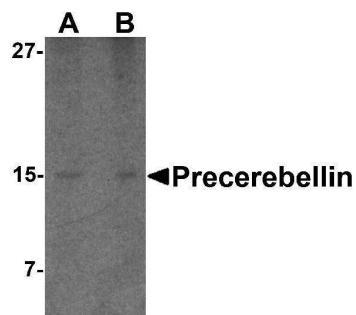
### Technical Details

Immunogen	Precerebellin antibody was raised against a 15 amino acid synthetic peptide from the middle of human precerebellin. The immunogen is located within amino acids 50 - 100 of Precerebellin.
Predicted Reactive Species	Bovine
Isotype	IgG
Form	Liquid
Concentration	1 mg/mL
Purification	Precerebellin Antibody is affinity chromatography purified via peptide column.

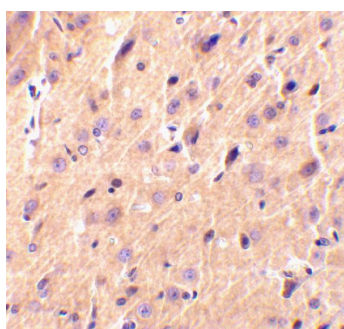
**Suggested Dilutions**

Precerebellin antibody can be used for the detection of precerebellin by Western blot at 2 - 4 ug/mL. Antibody can also be used for immunohistochemistry starting at 2 ug/mL. Antibody validated: Western Blot in mouse samples and Immunohistochemistry in rat samples. All other applications and species not yet tested. Optimal dilutions for each application should be determined by the researcher.

## Anti-Precerebellin CBLN1 Antibody (A09176-3) Images



Western blot analysis of precerebellin in mouse cerebellum lysate with precerebellin antibody at (A) 2 and (B) 4 ug/mL.



Immunohistochemical staining of rat brain tissue using precerebellin antibody at 2 ug/mL.

### Submit a product review to [Biocompare.com](https://www.biocompare.com)

Submit a review of this product to [Biocompare.com](https://www.biocompare.com) to receive a \$20 Amazon.com giftcard! Your reviews help your fellow scientists make the right decisions. Thank you for your contribution.



Anti-Precerebellin CBLN1 Antibody

For Research Use Only. Not for use in diagnostic procedures.