

Anti-SCUBE2 Antibody

Catalog Number: A09179

About SCUBE2

SCUBE2 is a member of a family of secreted glycoproteins that contain N-terminal EGF-like repeats and C-terminal cysteine-rich motifs and CUB domain and are expressed in embryonic neuroectoderm and vascular epithelium. SCUBE2 is a close homolog to SCUBE1 and can form a heterodimeric complex with SCUBE1. SCUBE2 is thought to participate in the Hedgehog signaling pathway by specifically interacting with Sonic Hedgehog (SHH) and the receptor PTCH1, enhancing the SHH signaling activity in the raft microdomains of the plasma membrane, and may thus play important roles in organ development and tumor progression.

Overview

Product Name	Anti-SCUBE2 Antibody
Reactive Species	Human, Rat
Description	Boster Bio Anti-SCUBE2 Antibody (Catalog # A09179). Tested in ELISA, WB, ICC, IF applications. This antibody reacts with Human, Rat.
Application	ELISA, IF, ICC, WB
Clonality	Polyclonal
Formulation	SCUBE2 Antibody is supplied in PBS containing 0.02% sodium azide.
Storage Instructions	SCUBE2 antibody can be stored at 4°C for three months and -20°C, stable for up to one year. Avoid repeated freeze-thaw cycles. Antibodies should not be exposed to prolonged high temperatures.
Host	Rabbit
Uniprot ID	Q9NQ36

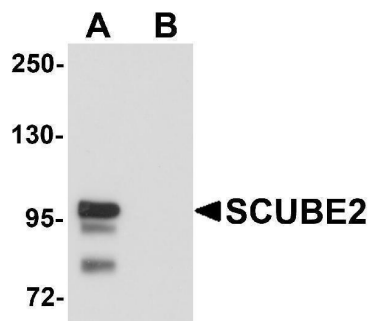
Technical Details

Immunogen	SCUBE2 antibody was raised against a 17 amino acid synthetic peptide near the center of human SCUBE2. The immunogen is located within amino acids 480 - 530 of SCUBE2.
Predicted Reactive Species	Bovine
Isotype	IgG
Form	Liquid
Concentration	1 mg/mL
Purification	SCUBE2 Antibody is affinity chromatography purified via peptide column.
Suggested Dilutions	SCUBE2 antibody can be used for detection of SCUBE2 by Western blot at 1 ug/mL. Antibody can also be used for immunocytochemistry starting at 20 ug/mL. For immunofluorescence start at 20

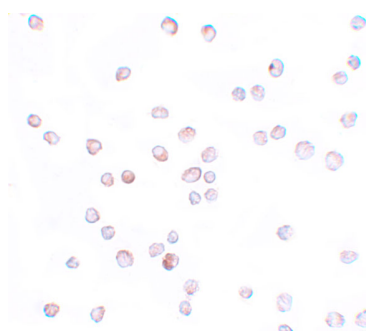
ug/mL.

Antibody validated: Western Blot in human samples; Immunocytochemistry in human samples and Immunofluorescence in human samples. All other applications and species not yet tested. Optimal dilutions for each application should be determined by the researcher.

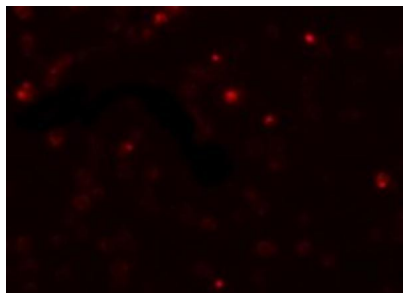
Anti-SCUBE2 Antibody (A09179) Images



Western blot analysis of SCUBE2 in Daudi cell lysate with SCUBE2 antibody at 1 ug/mL in (A) the absence and (B) the presence of blocking peptide.



Immunocytochemistry of SCUBE2 in Daudi cells with SCUBE2 antibody at 20 ug/mL.



Immunofluorescence of SCUBE2 in Daudi cells with SCUBE2 antibody at 20 ug/mL.

Submit a product review to [Biocompare.com](https://www.biocompare.com)

Submit a review of this product to [Biocompare.com](https://www.biocompare.com) to receive a \$20 Amazon.com giftcard! Your reviews help your fellow scientists make the right decisions. Thank you for your contribution.



Anti-SCUBE2 Antibody

For Research Use Only. Not for use in diagnostic procedures.