

Anti-IL-1RL2 Antibody

Catalog Number: A09203

About IL1RL2

IL-1RL2 is a member of the interleukin 1 receptor family, but it is incapable of binding to interleukin 1 alpha and interleukin 1 beta with high affinity (1). Together with IL-1RAcP, it can bind members of the IL-36 cytokine family, leading to activation of the NF-kappaB pathway (2). IL-1RL2 can also bind to IL-1F10, resulting in a decreased product of Th17 cytokines in response to immunological or LPS challenge, suggesting that one potential role of IL-1RL2 may be to modulate the immune and inflammation response (3).

Overview

Product Name	Anti-IL-1RL2 Antibody
Reactive Species	Human, Mouse, Rat
Description	Boster Bio Anti-IL-1RL2 Antibody (Catalog # A09203). Tested in ELISA, WB, IHC-P, IF applications. This antibody reacts with Human, Mouse, Rat.
Application	ELISA, IF, IHC-P, WB
Clonality	Polyclonal
Formulation	IL-1RL2 antibody is supplied in PBS containing 0.02% sodium azide.
Storage Instructions	IL-1RL2 antibody can be stored at 4°C up to one year. Antibodies should not be exposed to prolonged high temperatures.
Host	Rabbit
Uniprot ID	Q9HB29

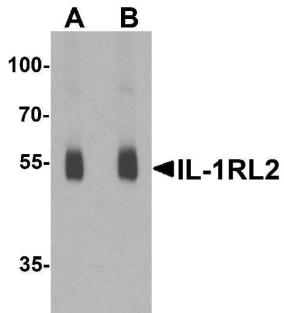
Technical Details

Immunogen	IL-1RL2 antibody was raised against a 16 amino acid peptide near the center of human IL-1RL2. The immunogen is located within amino acids 260 - 310 of IL-1RL2.
Predicted Reactive Species	Bovine
Cross Reactivity	IL-1RL2 antibody is human, mouse and rat reactive. At least three isoforms of IL-1RL2 are known to exist; this antibody will detect all three isoforms. IL-1RL2 antibody is predicted to not cross-react with IL-1R or IL-1RL1.
Isotype	IgG
Form	Liquid
Concentration	1 mg/mL
Purification	IL-1RL2 antibody is affinity chromatography purified via peptide column.

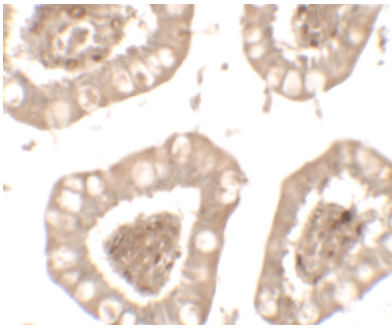
Suggested Dilutions

IL-1RL2 antibody can be used for detection of IL-1RL2 by Western blot at 1 - 2 ug/ml.
Antibody validated: Western Blot in human samples; Immunohistochemistry in human samples and Immunofluorescence in human samples. All other applications and species not yet tested. Optimal dilutions for each application should be determined by the researcher.

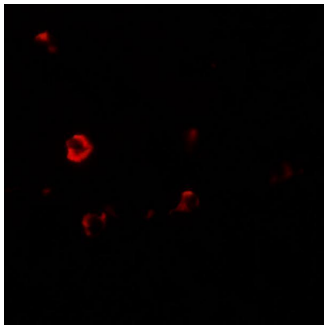
Anti-IL-1RL2 Antibody (A09203) Images



Western blot analysis of IL-1RL2 in human small intestine lysate with IL-1RL2 antibody at (A) 1 and (B) 2 ug/ml.



Immunohistochemistry of IL-1RL2 in human small intestine tissue with IL-1RL2 antibody at 5 ug/mL.



Immunofluorescence of IL-1RL2 in human small intestine tissue with IL-1RL2 antibody at 20 ug/mL.

Submit a product review to [Biocompare.com](https://www.biocompare.com)

Submit a review of this product to [Biocompare.com](https://www.biocompare.com) to receive a \$20 Amazon.com giftcard! Your reviews help your fellow scientists make the right decisions. Thank you for your contribution.



Anti-IL-1RL2 Antibody

For Research Use Only. Not for use in diagnostic procedures.